



Common Sound Issues: Are You Experiencing Any Of These Problems?

ABSORPTION

- Speech Intelligibility
- Reverberation
- Sound Quality
- Loudness
- Echo
- Hearing Protection

ISOLATION

- Sound Transfer
- Impact Noise
- Vibration Noise
- Low Frequencies

PROJECT SUMMARY

Absorption: Yes
Isolation: No
Install: Moderate
Cost: \$\$- \$\$\$

Planning Checklist

MUST KNOW

- Room Dimensions
- Ceiling Height
- New Build or Retrofit

GOOD TO KNOW

- Type of Lighting
- Ventilation/Ductwork
- Fire Suppression Systems
- Current Sound Treatments

Questions to ask an Acoustic Specialist

- *What type of solution should I consider?*
- *What kind of results can I expect from this acoustic treatment?*
- *Can I solve my problem in stages, or do I have to buy all at once?*
- *How does installation work? Do I need to buy any hanging hardware or tools separately?*
- *What questions haven't I asked yet that I should ask before making a decision?*

LEVEL OF COVERAGE

TYPICAL APPLICATIONS

<p>Light Absorption 5% - 25% of Wall Surface Area</p>	Appropriate for live recording or listening rooms, offices, conference rooms and rooms where people gather and converse.
<p>Moderate Absorption 25% - 50% of Wall Surface Area</p>	Suits listening and control rooms that typically feature more subdued music, as well as larger business spaces. Moderate absorption of around 50 percent is a good estimate for many home theaters.
<p>Heavy Absorption 50% - 100% of Wall Surface Area</p>	Suits drum rooms, music practice space, rooms that handle high-energy music. Vocal booths and recording isolation booths require the most absorption.



Ask yourself, What does success sound like?

Make sure you buy a solution, not a product. Your solution starts with understanding your problem and having realistic goals to attain.

TYPE OF TREATMENT NEEDED

ABSORPTION: YES

Sound absorption takes care of many sound issues at the source. Audimute's Acoustic Panels achieve results by absorbing mid and high-frequency sounds before they can scatter and distort around rooms.

ISOLATION: MAYBE

Sound isolation addresses sound issues that bother people outside of the room in question. Isolation treatments either add mass to walls, or work as a constrained layer to transform sound. Either way, isolation (or "barrier") materials prevent sound from passing between neighboring areas.

We Recommend:

2" Thick Acoustic Panels

Why? Acoustic Panels absorb distracting and irritating excess noise and prevent sound from bouncing around the room, making the shopping experience more enjoyable. Smaller sized panels may make it easier to work around displays or racks.

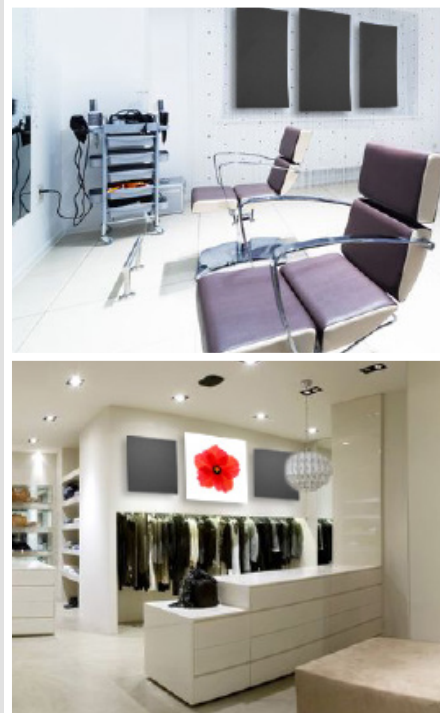
Acoustic Ceiling Baffles

Why? When wall space is limited, ceiling baffles can be an effective solution. They are especially suited for spaces with high ceilings and hard, reflective flooring.



IF YOU CAN IMAGINE IT, THEN WE CAN CREATE IT

At Audimute we're able to make your product exclusively your own. There are virtually no limits to what can be done in your space with our products. We have the ability to custom cut, shape, print images, color coat and more with our products. If you can imagine it, then we can create it!



PRO TIPS: Get The Most Out of Your Sound Treatment

- As floor space is at a premium, it may be best to mount panels on the ceiling and hang up on walls.
- Treat all 4 walls if possible.
- Use branded image panels to maximize wall real estate. They double as acoustic treatment and décor statement.
- Consider approaching brands you sell to collaborate on image panels.



TAKE THE NEXT STEP

Consult with an acoustic specialist to get personalized advice

call us at (866) 505-6883

Or, if you haven't already, fill out a room analysis form at

AudimuteAcousticPanels.com