





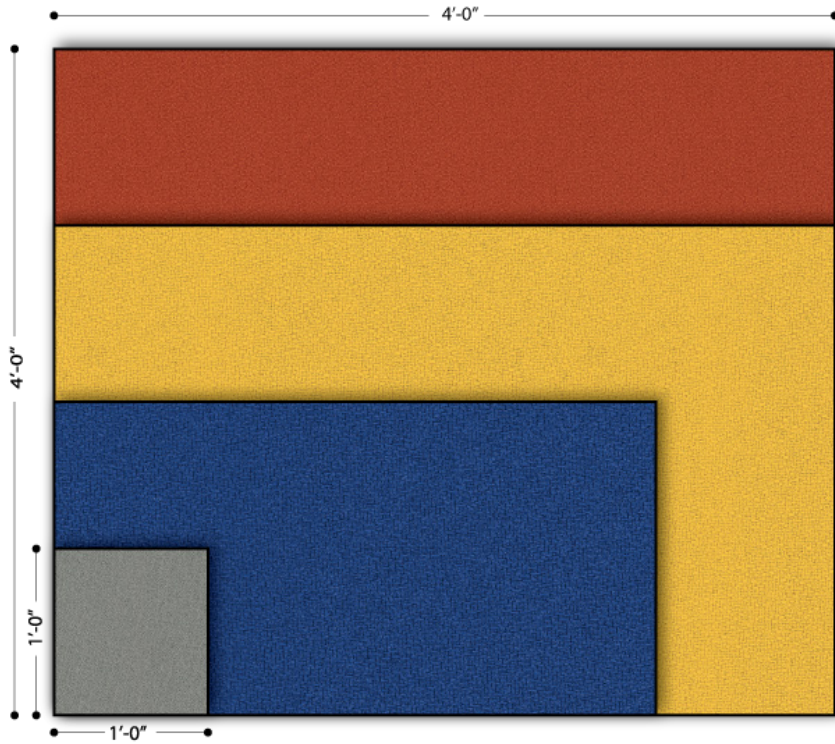


## Acoustic Ceiling Baffles

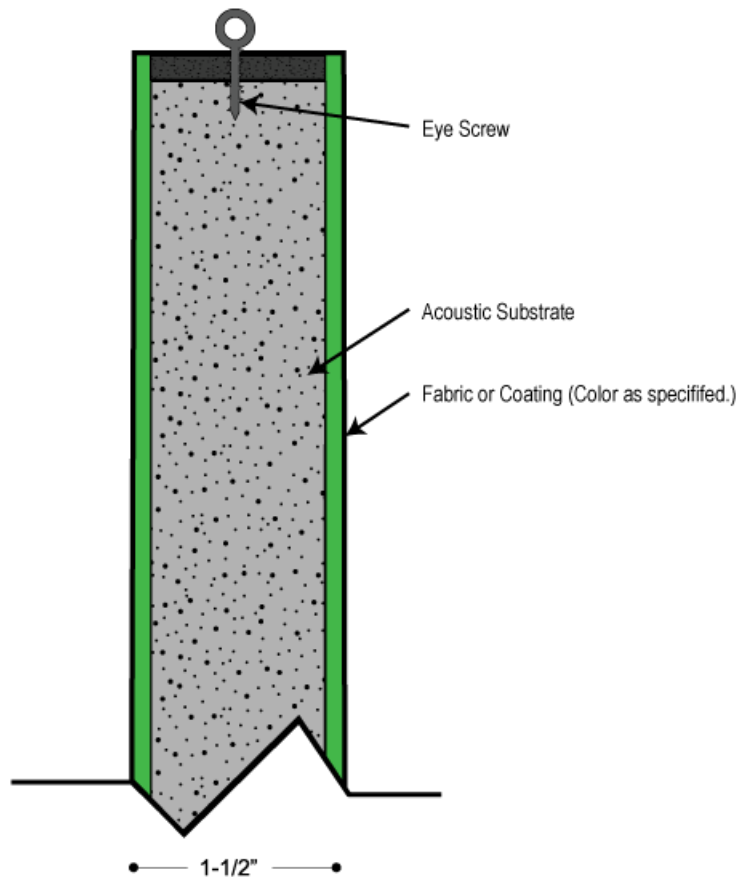
Audimute's Acoustic Baffles are an affordable solution for absorbing unwanted noise and troublesome echo. Our baffles can be custom coated in an acoustically transparent colors specifically chosen to coordinate with your design elements. Audimute acoustic baffles can also be covered in a variety of stylish fabric coverings. The fabric is affixed to the front, and back of each baffle and the remaining edges are coated with black, paint. Both the coated and fabric covered baffles come with two eye hooks that attach to most ceiling hanging solution.

Audimute's acoustic baffles are made from our trademarked eco-C-tex® product and are the greenest alternative to traditional foam baffles. These coustic baffles work great in gymnasiums, school cafeterias, restaurants and any other application where wall space may be limited.





Elevation: Acoustic Ceiling Baffle Min. to Max. Size (Custom Sizes Available)



Section View 1-1/2" Ceiling Acoustic Baffle



## ACOUSTICOLOR® ACCENT CEILING BAFFLES

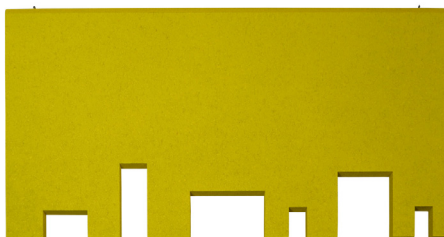
### Acoustics with an edge.

Developed to bring design flexibility, aesthetic appeal, and superior acoustic control to your ceilings. AcoustiColor® Accent Baffles feature your choice of three decorative edges - use them to accent baffle groupings or as a unique focal point; you decide. Select a paint finish that blends seamlessly with your décor, or make a bold design statement with a custom color to match any décor.

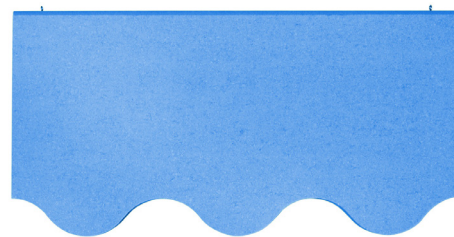
Exposing both sides of an acoustic ceiling baffle is one of the most effective methods for controlling ambient noise, reducing excessive reverberation, as well as echo and sound absorption in large open spaces.



Polygon



Skyline



Wave

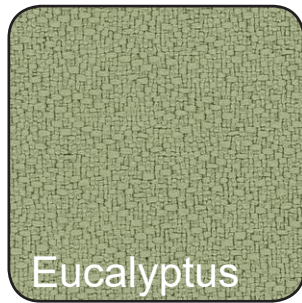
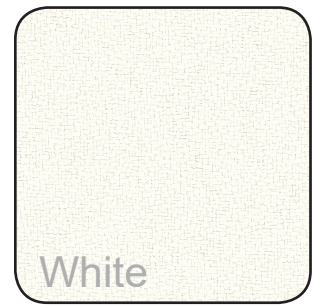
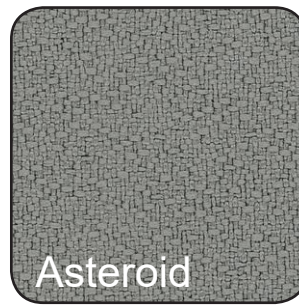


## AUDIMUTE ACOUSTIC CEILING BAFFLES

CONTENT:	Acoustic substrate- P.E.T. 10% - 30%, Recycled Cotton 70% - 90%, Fabric- Recycled polyester, Hardware Mounting Strip- Polyester Felt
COMPONENTS:	Acoustic Substrate, 2 Eye Screws, Hardware Mounting Strip, Fabric/Coating
THICKNESS:	1-1/2"
THICKNESS TOLERANCE:	+ -1/4"
SIZES:	1'x3', 1'x 4', 2' x 2', 2' x 4' (custom sizes up to 4' x 4')
FINISH OPTIONS:	Fabric, Images, AcoustiColor® Coating
BOTTOM EDGE STYLE:	Straight, Polygon, Skyline, Wave
APPLICATION:	Indoor/Ceiling
CUTTING/ALTERATIONS:	Table Saw w/ Metal Cutoff Blade, Jig Saw w/ T-Shank Scalloped Knife Blade, Foam Saw, Utility Knife
INSTALLATION:	Eye Screw (included), Cable (not included)
HANDLING/CARE:	When handling Acoustic Baffles make sure hands are clean and oil free. Vacuuming or light brushing is recommended to prevent dust and soil buildup.
STORAGE:	Acoustic Baffles must be stored in a dry place. Delivery Packaging is not ideal for storage purposes. It is advised to place a polyethylene cover over the stack when packaging is removed, to reduce moisture absorption. It is recommended that baffles be stored horizontally. It is recommended that baffles should not be stacked. It is strongly recom- mended to avoid storage longer than 6 months. Do not allow water to come into direct contact with the material during storage. Store in a cool dry space 55°F-85°F.
FIRE RATING:	ASTM E84 Class A.
COLOR FASTNESS TO LIGHT:	Grade 4 min. at 40 hours
COLOR FASTNESS TO CROCK:	Grade 4 min. dry & Grade 3 min. wet
ACOUSTIC RATING:	NRC: 1-1/2"= <b>0.95</b>

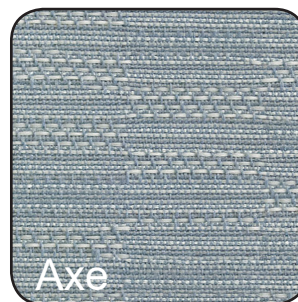
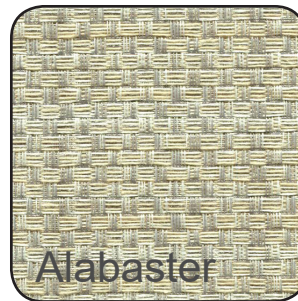
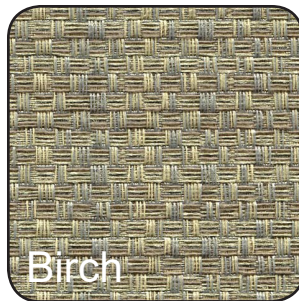
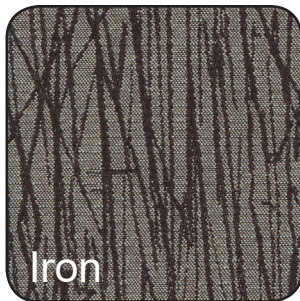


# Standard Fabrics





# Designer Fabrics

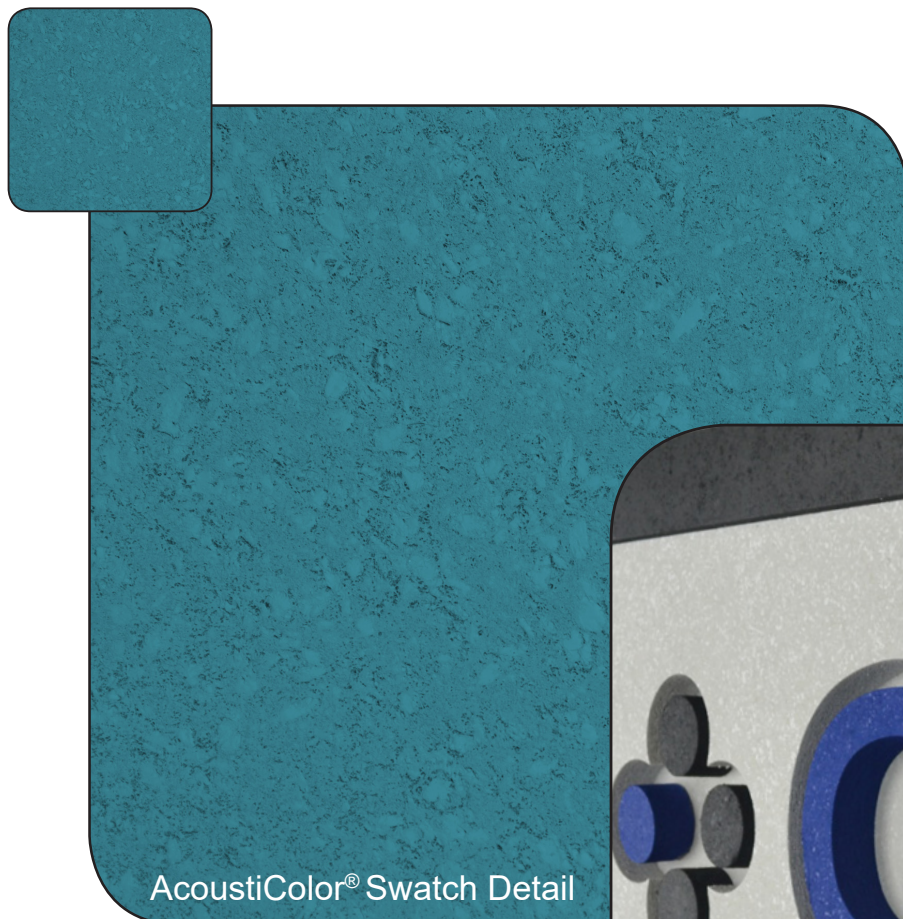




## ACOUSTICOLOR® COATING

THE POSSIBILITIES ARE ENDLESS.

There are 1,000's of color options to choose from Sherwin Williams' line of acoustical coatings. We can also match colors from other commercial paint manufacturers. With AcoustiColor Acoustic Tiles you have the opportunity to match the décor of any space. Our coated acoustic panels are made from recycled cotton and paper products which gives a unique textured finish.



AcoustiColor® Swatch Detail



AcoustiColor® Product Detail

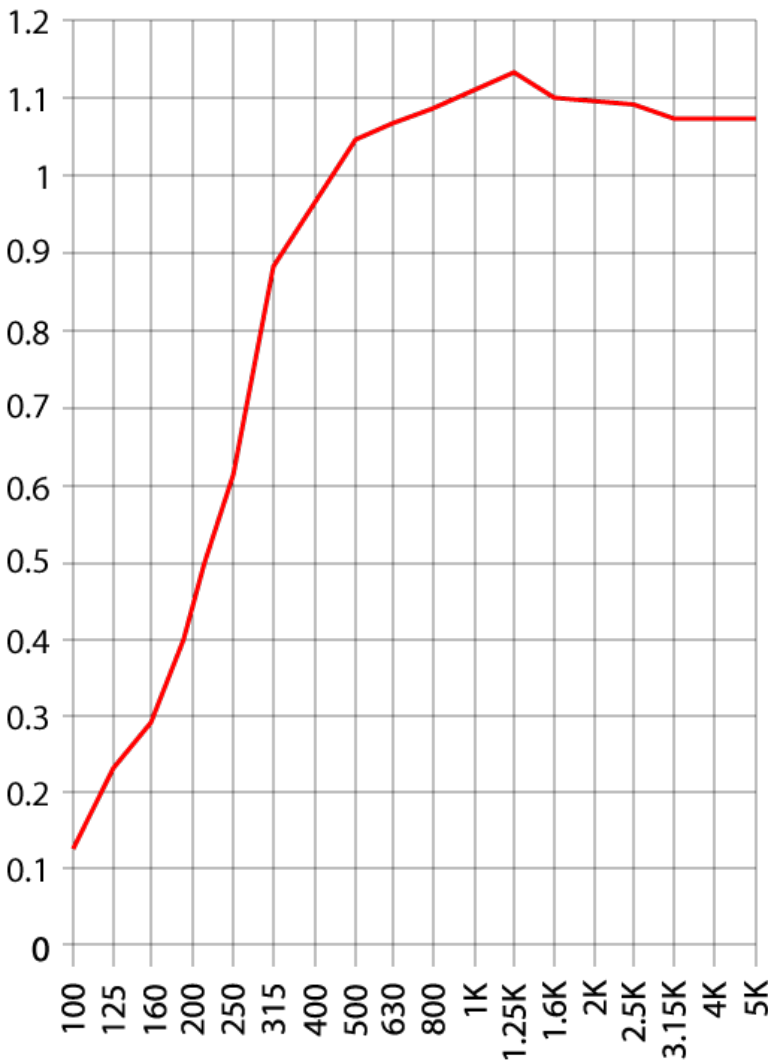
\*Color matching cannot be guaranteed across shipments from different orders and variation may be more pronounced beyond the normal commercial range.



AUDIMUTE 1.5" ACOUSTIC CEILING BAFFLE

TEST REPORT

SOUND ABSORPTION REPORT  
RAL-A17-297



FREQUENCY (Hz)

SAA=0.97

NRC=0.95

TEST Report Audimute 1.5" Acoustic Ceiling Baffle

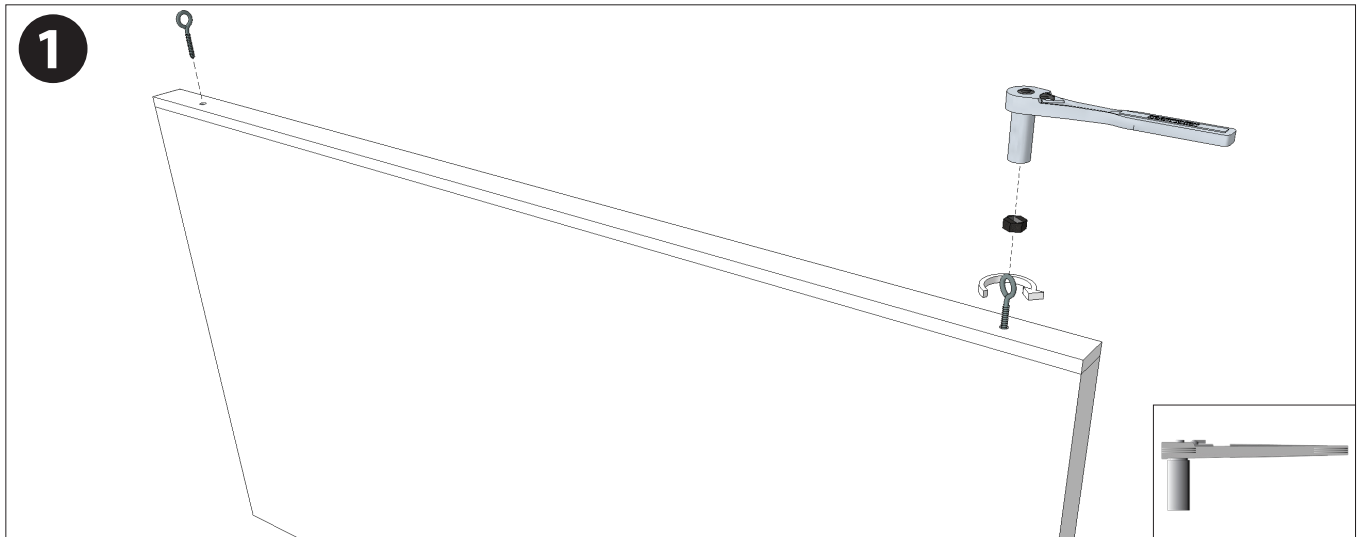
The test report quotes the frequency dependent sound absorption data as well as the single number ratings. Data taken from Test Report RAL-A17-297 conducted by Riverbank Acoustical Laboratories. Complete test results are available upon request.

# Ceiling Hardware Installation Instructions:

## AUDIMUTE ACOUSTIC CEILING BAFFLES

## AUDIMUTE ACOUSTIC CEILING CLOUDS

### Baffles:



### Clouds :

