



 **Audimute**[®]
Sound Experiences Everywhere[™]

Acoustic Ceiling Tiles

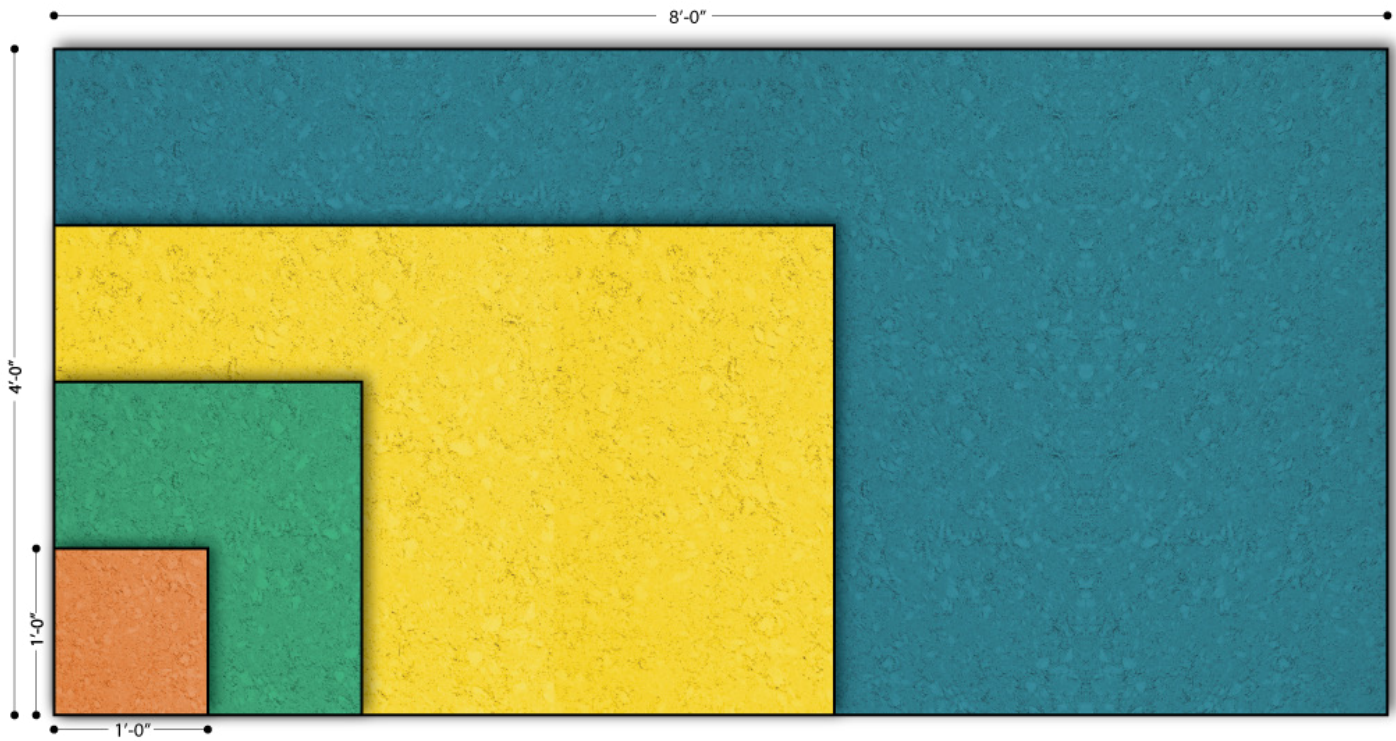


ACOUSTIC DIRECT MOUNT CEILING TILES **CEILING IS BELIEVING.**

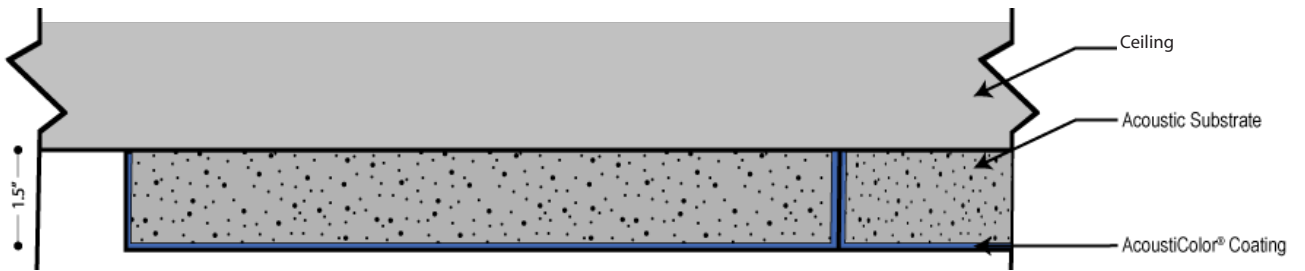
Direct Mount Tiles are an acoustical ceiling system installed directly to the ceiling surface using adhesive or a mechanical fastener suitable for your specific substrate and installation needs. The direct mount ceiling collection was designed specifically for this purpose making them the ideal acoustic ceiling tile for surface mount installations.

With almost unlimited color options, this concept combines innovative interior design and top-quality acoustics for decors that are unique both visually and acoustically. Whether you are remodeling an entire room or simply accenting a small area, these ceiling tiles create an instant designer look.

When soundproofing is essential for noise and sound control, absorption ceiling tiles provide the control you want, where you need it most.



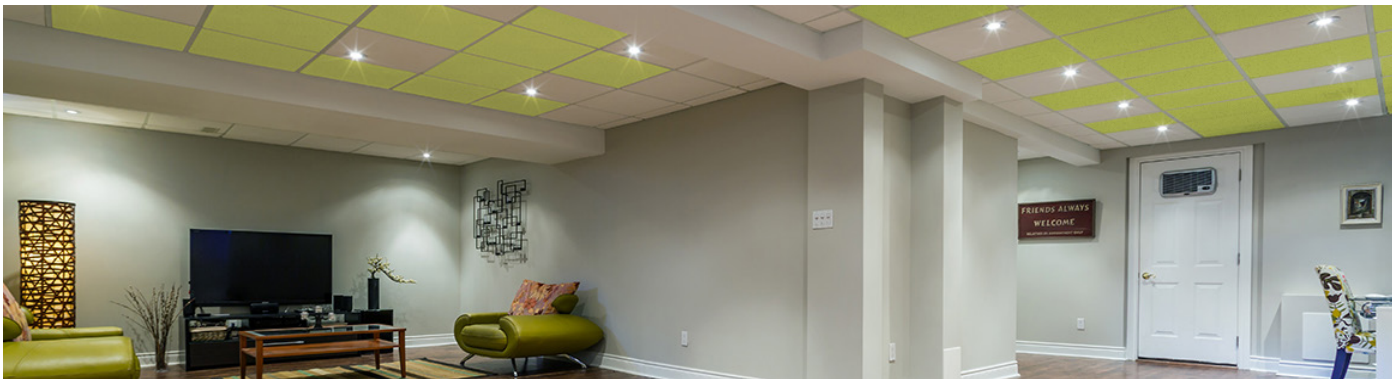
Elevation: Acoustic Direct Mount Ceiling Tile Min. to Max. Size (custom sizes available)



Ceiling Section Cut: 1-1/2" Acoustic Direct Mount Ceiling Tile

AUDIMUTE DIRECT MOUNT ACOUSTIC CEILING TILE

CONTENT:	Acoustic substrate- P.E.T. 10% - 30%, Recycled Cotton 70% - 90%,
COMPONENTS:	Acoustic Substrate, Coating
THICKNESS:	1-1/2"
THICKNESS TOLERANCE:	+ -1/4"
SIZES:	1' x 1', 1' x 2', 1' x 3', 1' x 4', 2' x 2', 2' x 3', 2' x 4', 3' x 3'. (custom sizes up to 4' x 8')
FINISH OPTIONS:	AcoustiColor® Coating
EDGE STYLE:	Straight
APPLICATION:	Indoor Ceiling
CUTTING/ALTERATIONS:	Table Saw w/ Metal Cutoff Blade, Jig Saw w/ T-Shank Scalloped Knife Blade, Foam Saw, Utility Knife
INSTALLATION:	Construction Adhesive, Mechanical Lock
HANDLING/CARE:	When handling tiles make sure hands are clean and oil free. Vacuuming or light brushing is recommended to prevent dust and soil buildup.
STORAGE:	Acoustic Ceiling Tiles must be stored in a dry place. Delivery Packaging is not ideal for storage purposes. It is advised to place a polyethylene cover over the stack when packaging is removed, to reduce moisture absorption. It is recommended that panels be stored horizontally. It is recommended that panels should not be stacked. It is strongly recommended to avoid storage longer than 6 months. Do not allow water to come into direct contact with the material during storage. Store in a cool dry space 55°f-85°f.
FIRE RATING:	ASTM E84 Class A.
ACOUSTIC RATING:	NRC: 0.95



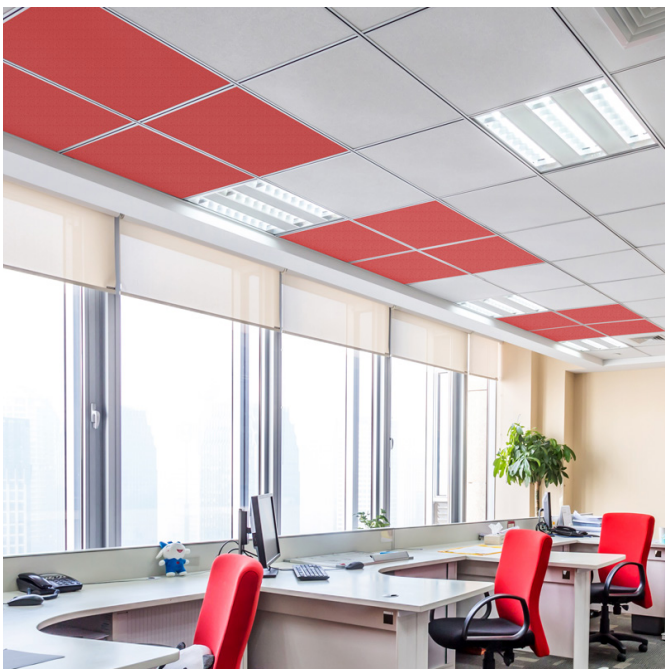
ACOUSTIC DROP CEILING TILES

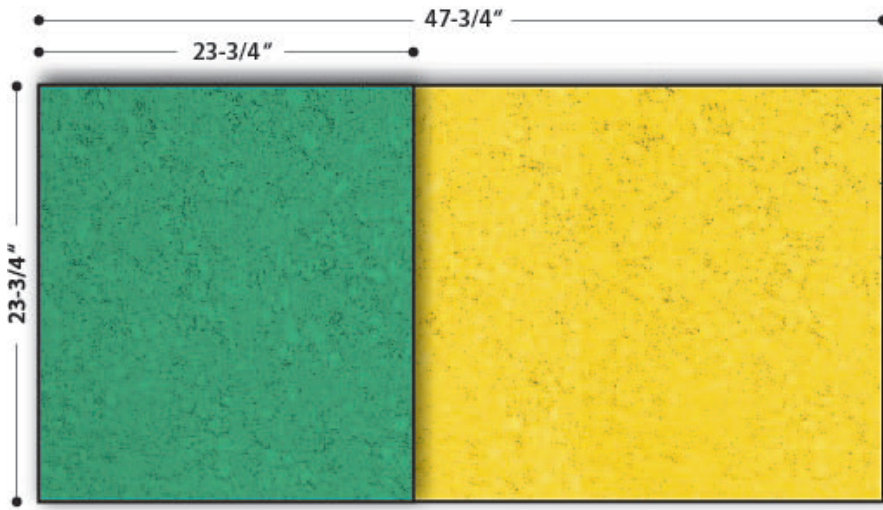
JUST DROP IN.

Audimute acoustical ceiling tiles are effective and affordable with excellent sound absorption qualities. If you're remodeling a room or looking for the best solution for acoustic sound control, a suspended ceiling offers a functional and stylish acoustic treatment option.

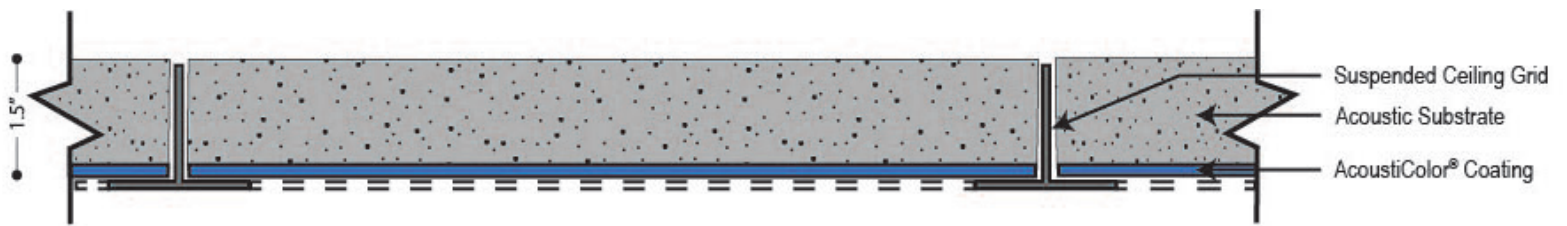
A standard of modern residential and commercial architecture, acoustic drop ceiling tiles will transform your interior space with superior acoustical performance. Audimute offers wide-ranging options in performance and design. Get inspired by the possibilities while improving the acoustics of your rooms.

An ideal choice for environments where noise reduction is important. Acoustic Drop Ceiling Tiles will make both a functional as well as an aesthetic impact to overhead space.





Plan View: Acoustic Drop Ceiling Tile. Min. to Max. Size (Custom Sizes Available)



Section View 1-1/2" Acoustic Drop Ceiling Tile Detail

AUDIMUTE ACOUSTIC DROP CEILING TILE

CONTENT:	Acoustic substrate- P.E.T. 10% - 30%, Recycled Cotton 70% - 90%,
COMPONENTS:	Acoustic Substrate, Coating
THICKNESS:	1-1/2"
THICKNESS TOLERANCE:	+ -1/4"
SIZES:	23-3/4" x 23-3/4" , 23-3/4" x 47-3/4", (custom sizes up to 4' x 8')
FINISH OPTIONS:	AcoustiColor® Coating
EDGE STYLE:	Straight
APPLICATION:	Indoor Drop Ceiling
CUTTING/ALTERATIONS:	Table Saw w/ Metal Cutoff Blade, Jig Saw w/ T-Shank Scalloped Knife Blade, Foam Saw, Utility Knife
INSTALLATION:	Drop into ceiling grid.
HANDLING/CARE:	When handling tiles make sure hands are clean and oil free. Vacuuming or light brushing is recommended to prevent dust and soil buildup.
STORAGE:	Acoustic Ceiling Tiles must be stored in a dry place. Delivery Packaging is not ideal for storage purposes. It is advised to place a polyethylene cover over the stack when packaging is removed, to reduce moisture absorption. It is recommended that panels be stored horizontally. It is recommended that panels should not be stacked. It is strongly recommended to avoid storage longer than 6 months. Do not allow water to come into direct contact with the material during storage. Store in a cool dry space 55°f-85°f.
FIRE RATING:	ASTM E84 Class A.
ACOUSTIC RATING:	NRC: 0.95

ACOUSTICOLOR® COATING

THE POSSIBILITIES ARE ENDLESS.

There are 1,000's of color options to choose from Sherwin Williams' line of acoustical coatings. We can also match colors from other commercial paint manufacturers. With AcustiColor Acoustic Tiles you have the opportunity to match the decor of any space. Our coated acoustic panels are made from recycled cotton and paper products which gives a unique textured finish.



AcustiColor® Swatch Detail



AcustiColor® Product Detail

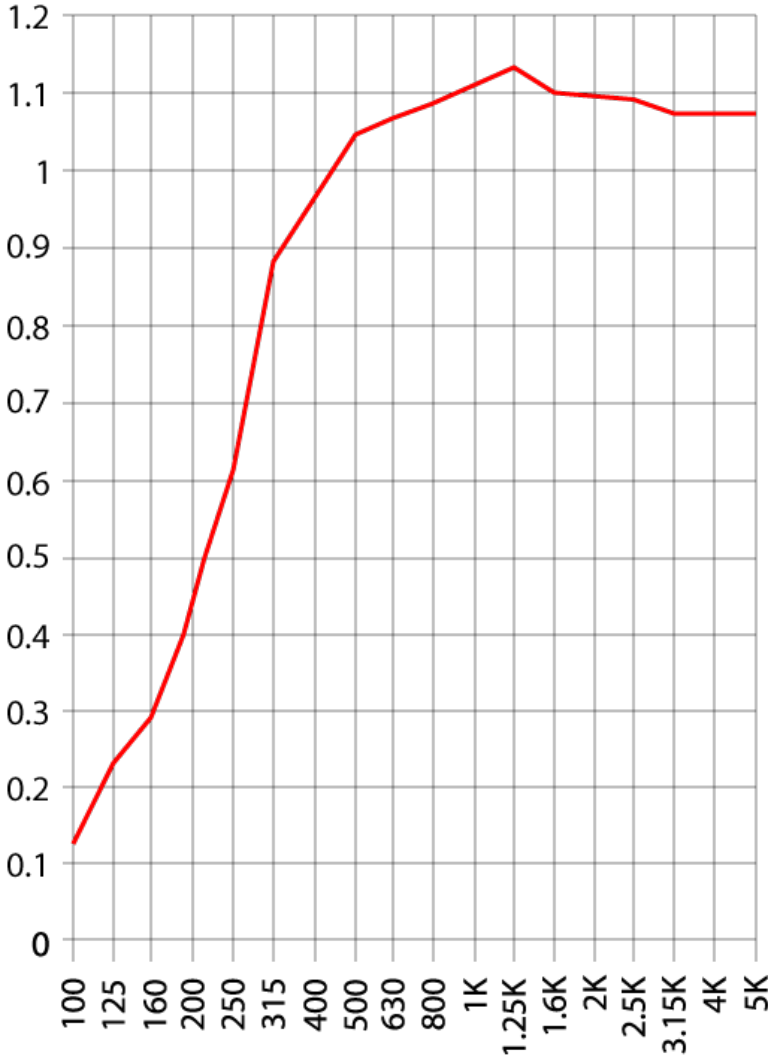
*Color matching cannot be guaranteed across shipments from different orders and variation may be more pronounced beyond the normal commercial range.

AUDIMUTE 1.5" ACOUSTIC CEILING TILES

TEST REPORT

SOUND ABSORPTION REPORT RAL-A17-297

Frequency (Hz)	Absorption Coefficient
100	0.13
125	0.23
160	0.29
200	0.43
250	0.62
315	0.87
400	0.96
500	1.04
630	1.07
800	1.09
1000	1.11
1250	1.14
1600	1.10
2000	1.10
2500	1.09
3150	1.06
4000	1.07
5000	1.06



FREQUENCY (Hz)

SAA=0.97

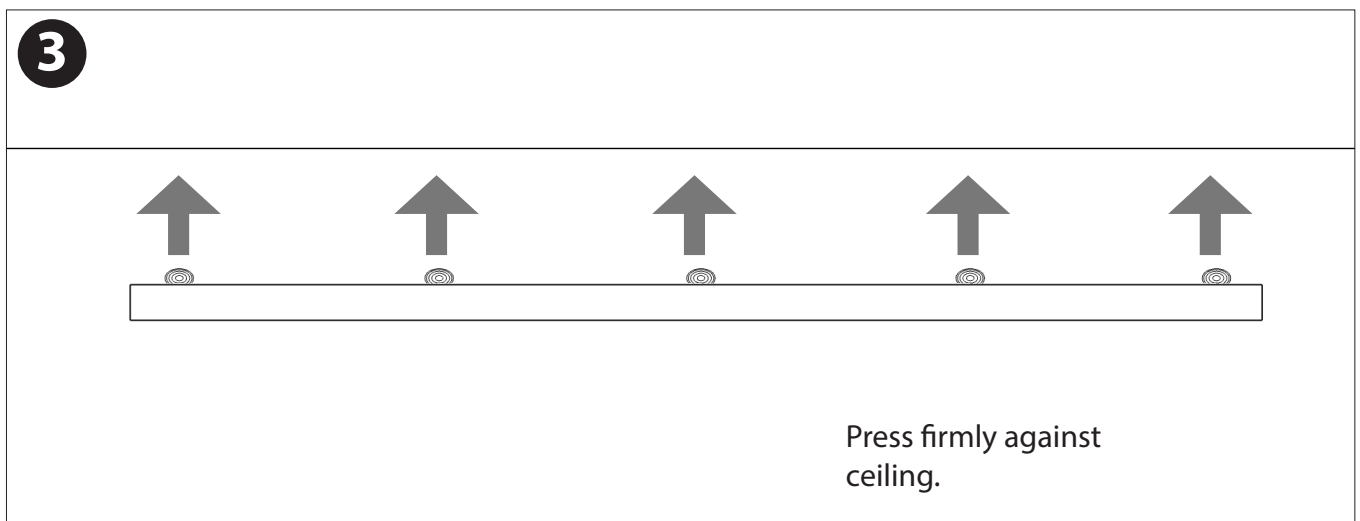
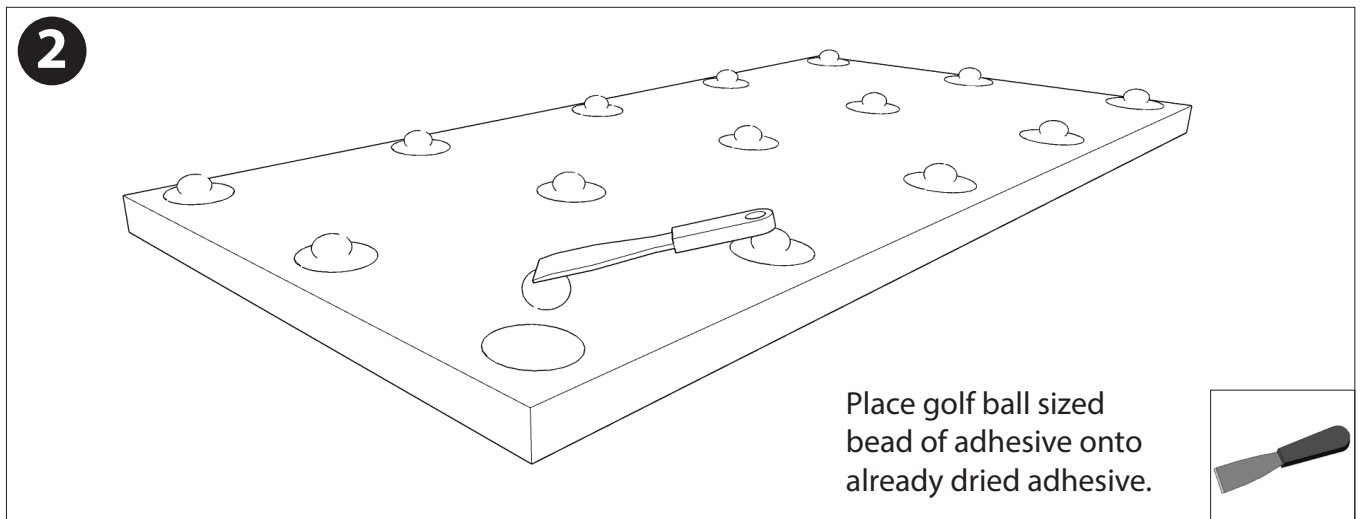
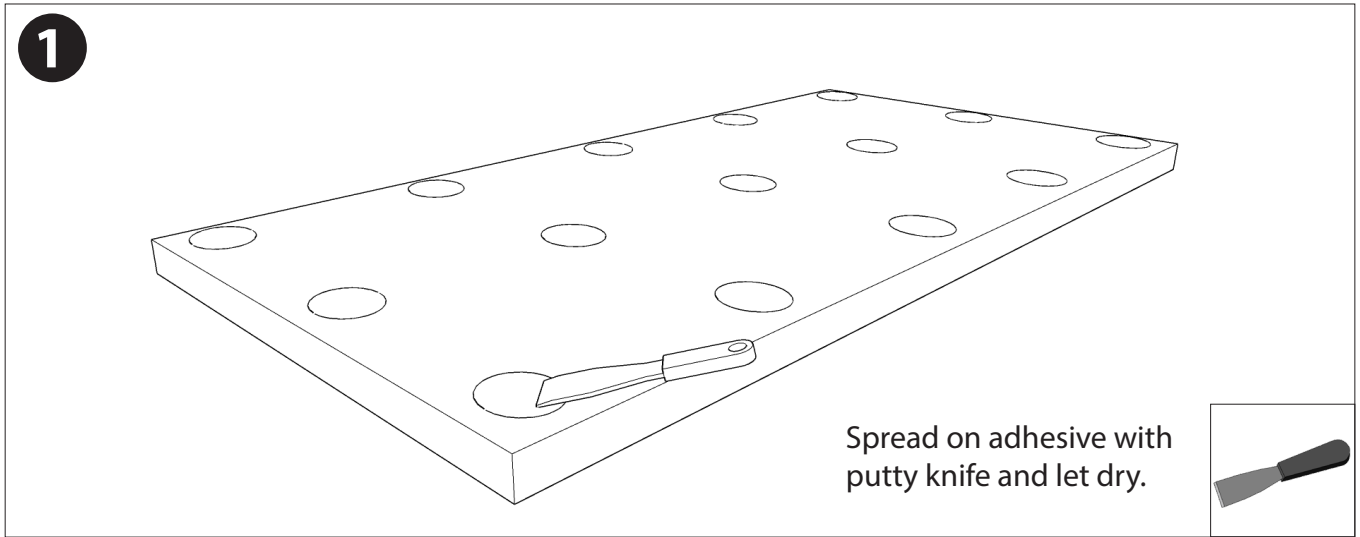
NRC=0.95

TEST Report Audimute 1.5" Acoustic Ceiling Tile

The test report quotes the frequency dependent sound absorption data as well as the single number ratings. Data taken from Test Report RAL-A17-297 conducted by Riverbank Acoustical Laboratories. Complete test results are available upon request.

Ceiling Tile Adhesive: AUDIMUTE ACOUSTIC DIRECT MOUNT CEILING TILES

TITEBOND® ACOUSTIC CEILING TILE ADHESIVE:



Ceiling Tile Adhesive: AUDIMUTE ACOUSTIC DROP CEILING TILES

DROP INTO CEILING GRID:

