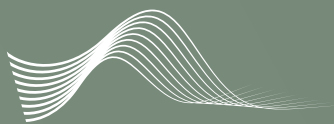


Audimute® Fabric Acoustic Panels



AUDIMUTE®
sound management solutions



FABRIC
ACOUSTIC
PANELS

FABRIC ACOUSTIC PANELS

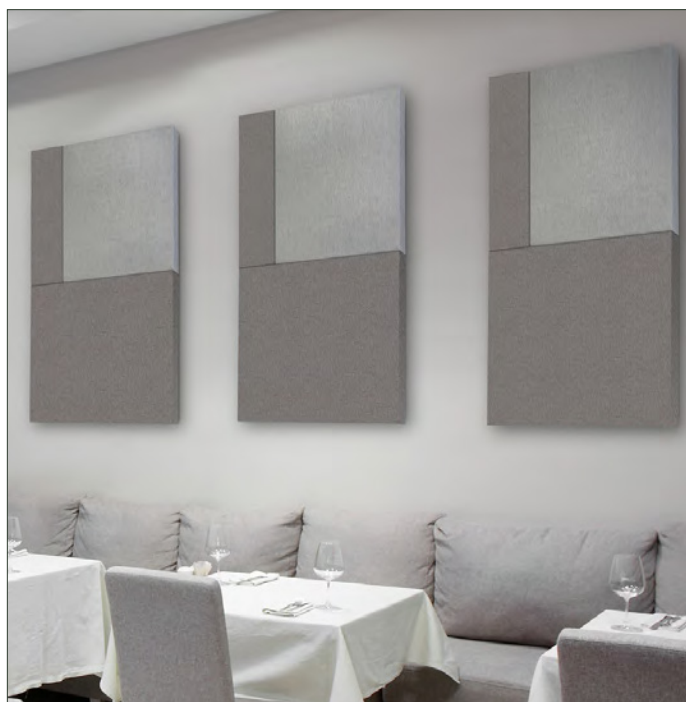
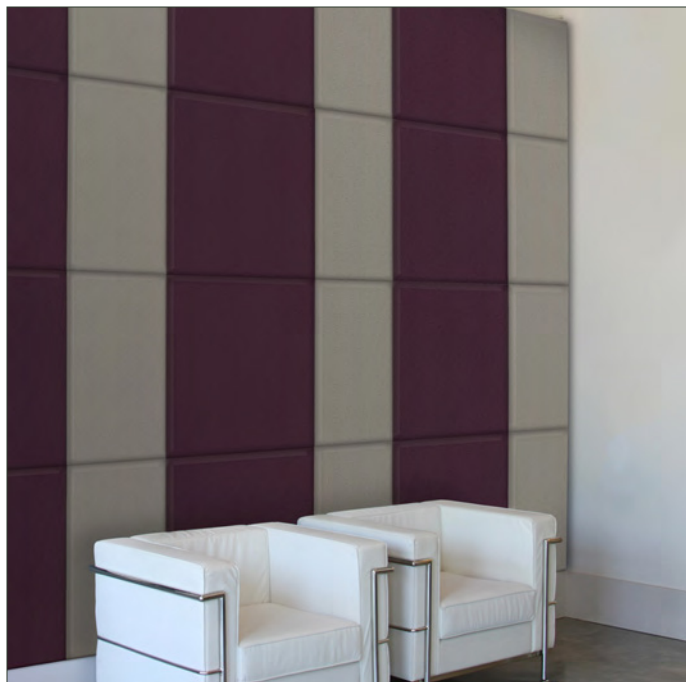
Love what you hear.

Audimute Acoustic Panels treat your space with elegance. Combining effectiveness with style, Audimute panels absorb echoes and reverberation while enhancing the overall décor of homes, apartments, studios, offices, and more.

The Straight Edge and Beveled Edge Fabric Acoustic Panels are precision cut and tightly wrapped in your choice of fabric. The result; nearly seamless fabric wrapped acoustic panels that can stand alone or nest adjacent next to each other to make large group installations.

Audimute panels feature eco-C-tex®, the greenest sound absorption material in today's marketplace made from a combination of recycled cotton and cellulose fibers from post-consumer recycled newspapers and fabrics. When properly applied, Audimute Acoustic Panels will reduce mid-to-high frequency sounds by as much as 95%!

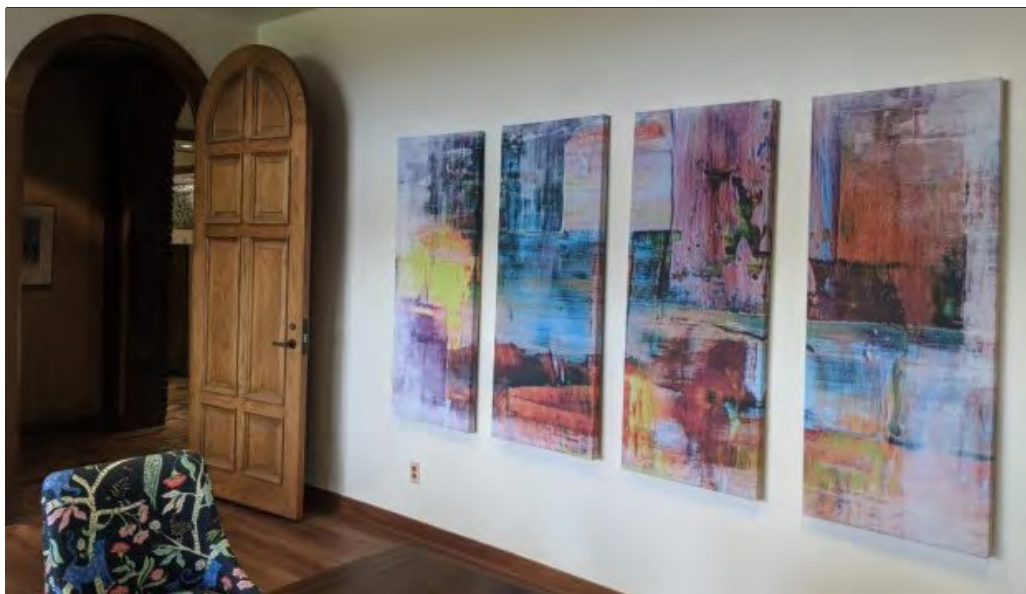
Improve the acoustics in your space with Audimute Fabric Acoustic Panels.



FABRIC ACOUSTIC IMAGE PANELS

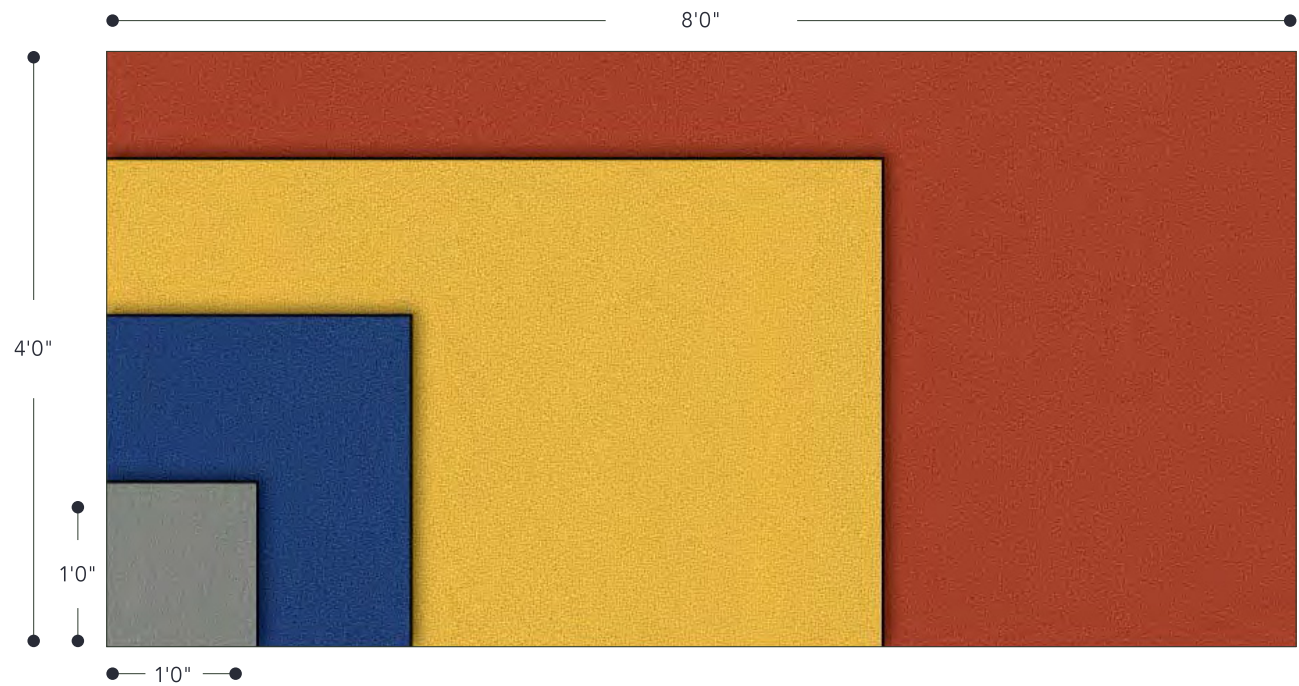
Personalize your panels!

Audimute Acoustic Image Panels have the same sound absorption qualities as Fabric Acoustic Panels. Upload an image of your own or choose from our selection of images. Improve the acoustics and style in your space with Audimute Acoustic Image Panels.

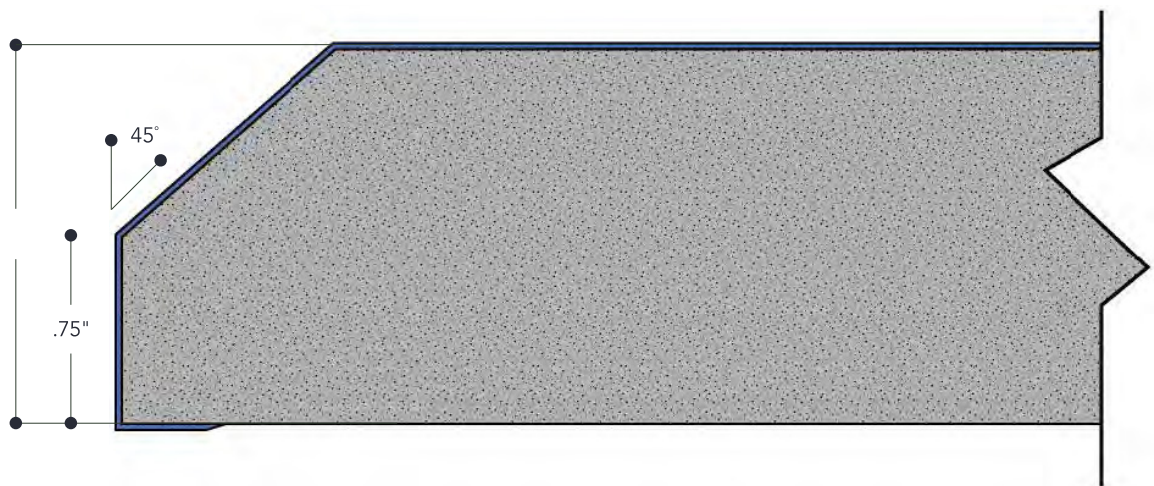


FABRIC ACOUSTIC PANELS

ELEVATION: ACOUSTIC PANEL MIN. TO MAX. SIZE
(Custom Sizes Available)

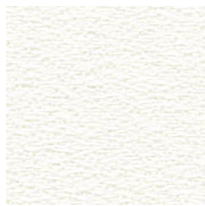


ELEVATION: BEVELED EDGE ACOUSTIC PANEL

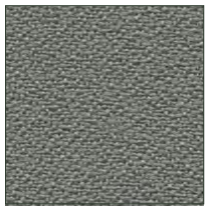


FABRIC ACOUSTIC PANELS: ANCHORAGE FABRICS

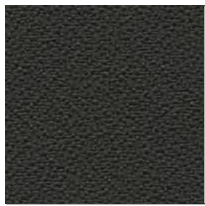
Create your own distinctive space with our Anchorage line of fabrics from Guilford of Maine.



White



Asteroid



Graphite



Onyx



Coffee Bean



Vanilla



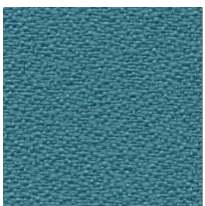
Birch



Fern



Green Apple



Waterfall



Quarry Blue



Lapis



Lemon



Pumpkin



Geranium



Orchid

FABRIC ACOUSTIC PANELS: FR701 & SYNOPSIS FABRICS

The FR701 & Synopsis fabrics from Guilford of Maine are bleach-cleanable.

FR701 FABRICS:



Eggshell



Pearl



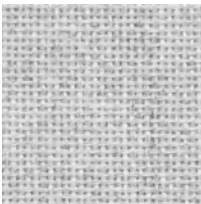
Quartz



Opal



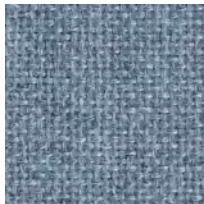
Cement Mix



Silver Papier



Blue Papier



Wedgewood



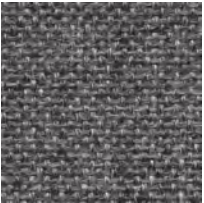
Silver Neutral



Grey Mix



Flannel



Medium Grey



Chartreuse



Sapphire



Red

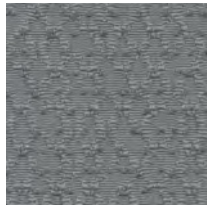


Black

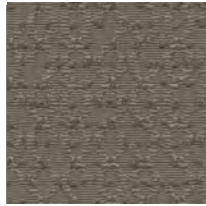
FABRIC ACOUSTIC PANELS: FR701 & SYNOPSIS FABRICS

The FR701 & Synopsis fabrics from Guilford of Maine are bleach-cleanable.

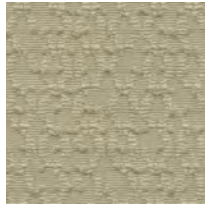
SYNOPSIS FABRICS:



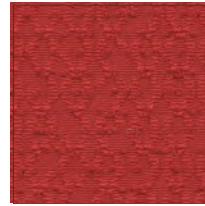
Ash



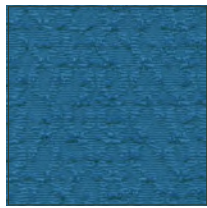
Taupe



Bisque



Poppy



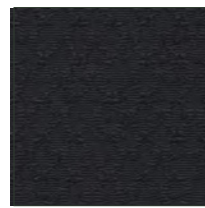
Cerulean



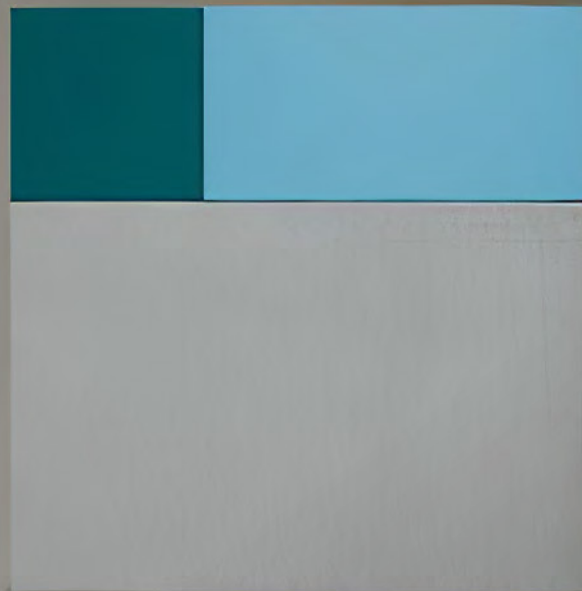
Blue Marine



Flannel



Ebony



ACOUSTIC PANELS: SPECIFICATIONS

FABRIC ACOUSTIC PANELS: SPECIFICATIONS

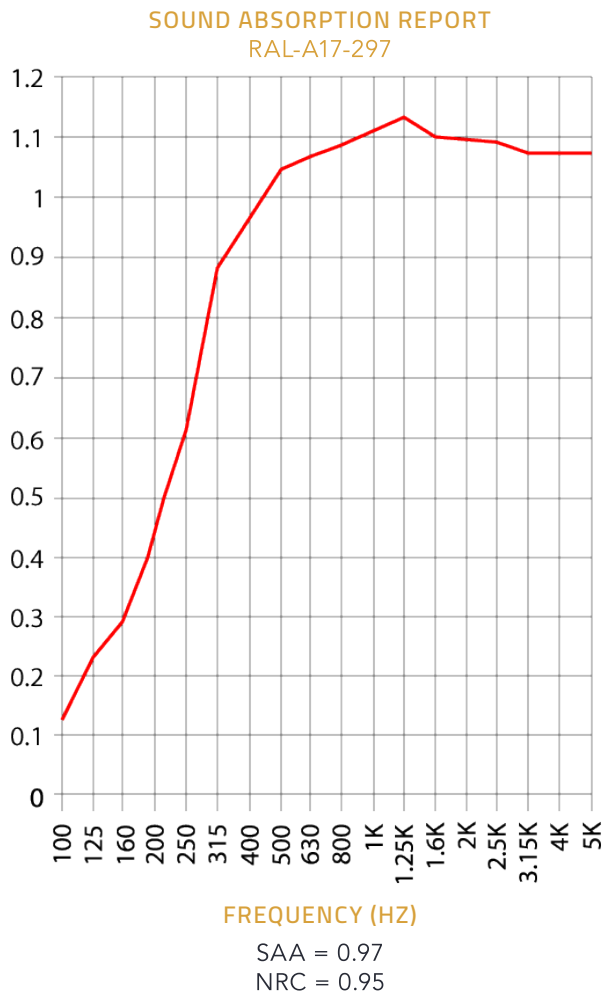
CONTENT	Acoustic substrate: P.E.T. 10% - 30%, Recycled Cotton 70% - 90% Fabric: Polyester
COMPONENTS	Acoustic Substrate, Fabric Cover
THICKNESS	1-1/2"
THICKNESS TOLERANCE	+ -1/4"
SIZES & WEIGHTS	1' x 1' (0.75 lb), 1' x 2' (1.5 lb), 1' x 3' (2.25 lb), 1' x 4' (3 lb), 2' x 2' (3 lb), 2' x 3' (4.5 lb), 2' x 4' (6 lb), 3' x 3' (6.75 lb), 3' x 4' (9 lb), 4' x 4' (12 lb), & Custom sizes up to 4'x 8'.
FINISH OPTIONS	Fabric, Image printed on fabric
EDGE STYLE	Straight or Beveled
APPLICATION	Indoor Wall
INSTALLATION	Audimute Hanging Tab, Keyhole Plate Method, Construction Adhesive, Mechanical Lock
HANDLING / CARE	When handling panels, make sure hands are clean and oil free. Vacuuming or light brushing is recommended to prevent dust and soil buildup.
STORAGE	Acoustic Panels must be stored in a dry place. Delivery Packaging is not ideal for storage purposes. It is advised to place a polyethylene cover over the stack when packaging is removed, to reduce moisture absorption. It is recommended that panels be stored horizontally. It is recommended that panels should not be stacked. It is strongly recommended to avoid storage longer than 6 months. Do not allow water to come into direct contact with the material during storage. Store in a cool dry space 55°F - 85°F.
FIRE RATING	ASTM E84 Class A. The acoustic fabric finishes also receive a NFPA 260 Class I rating.
COLOR FASTNESS TO LIGHT	Grade 4 min. at 40 hours
COLOR FASTNESS TO CROCK	Grade 4 min. dry & Grade 3 min. wet
ACOUSTIC RATING	NRC: 0.95

1.5" ACOUSTIC PANELS: ACOUSTIC TESTING

Acoustic Panels Test Report

The test report quotes the frequency dependent sound absorption data as well as the single number ratings. Data taken from Test Report RAL-A17-297 conducted by Riverbank Acoustical Laboratories. Complete test results are available upon request.

FREQUENCY (HZ)	ABSORPTION COEFFICIENT
100	0.13
125	0.23
160	0.29
200	0.43
250	0.62
315	0.87
400	0.96
500	1.04
630	1.07
800	1.09
1000	1.11
1250	1.14
1600	1.10
2000	1.10
2500	1.09
3150	1.06
4000	1.07
5000	1.06



Hang Tabs Installation Instructions:

ACOUSTIC PANELS (Fabric, Image, & AcoustiColor®) ACOUSTICOLOR & ACOUSTIFELT™ TILES & SHAPES

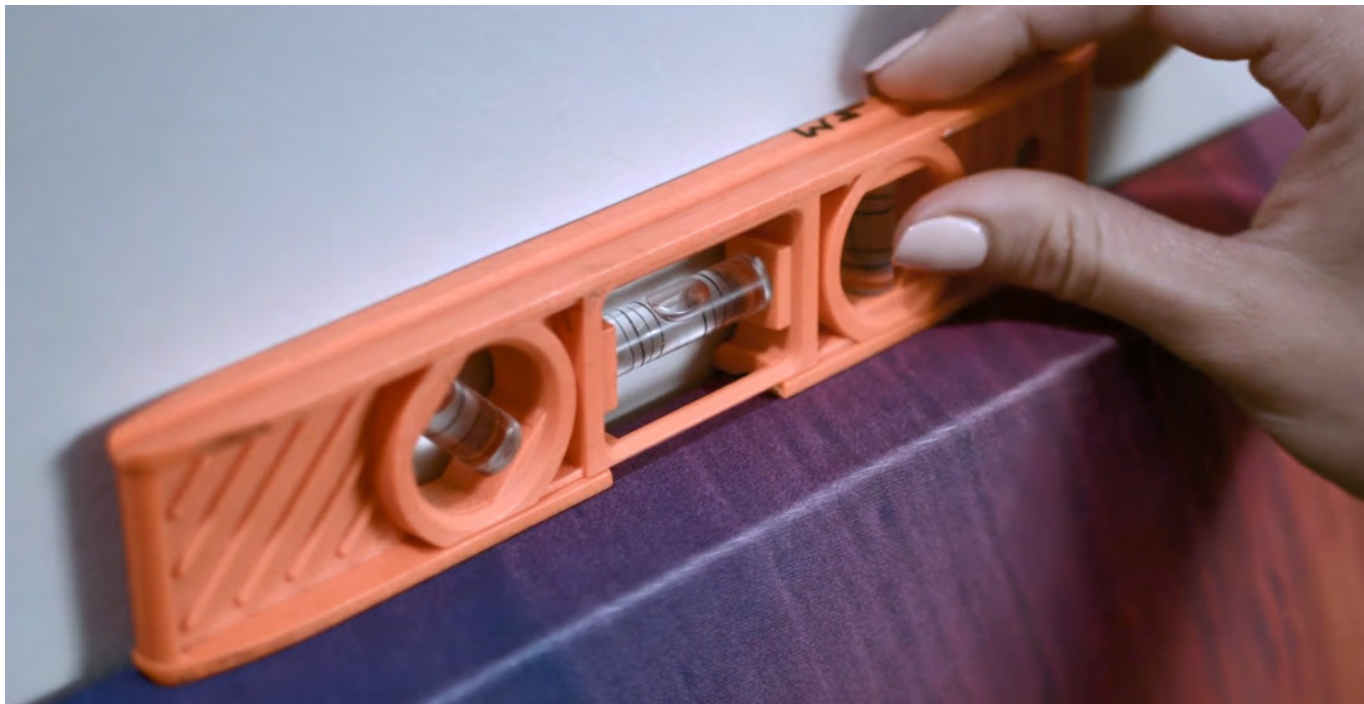
Hang tabs are made of durable plastic with an adhesive backing that adheres to the back of the panels, and is secured with two screws. The tabs are then used to mount panels to a wall using our Easy, Standard, or Stacked installation methods. Typically, two hang tabs are used per panel, however, larger panels may require more.

Items needed: Hang tabs with included screws, a level, a pencil, and a Phillips head screwdriver.

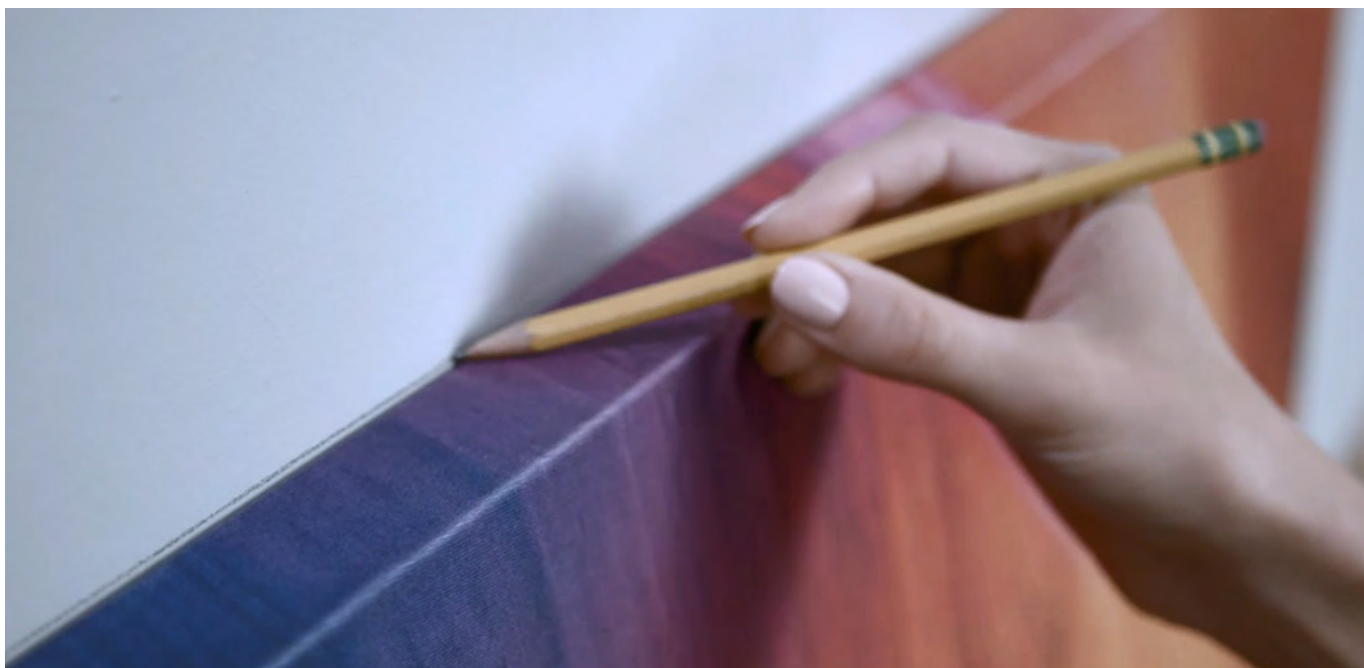


Please note: For the Standard & Stacked Hang Tabs installation methods, you will also need a measuring tape.

Step 1: Position a panel on the wall. Use a level on the top of the panel.

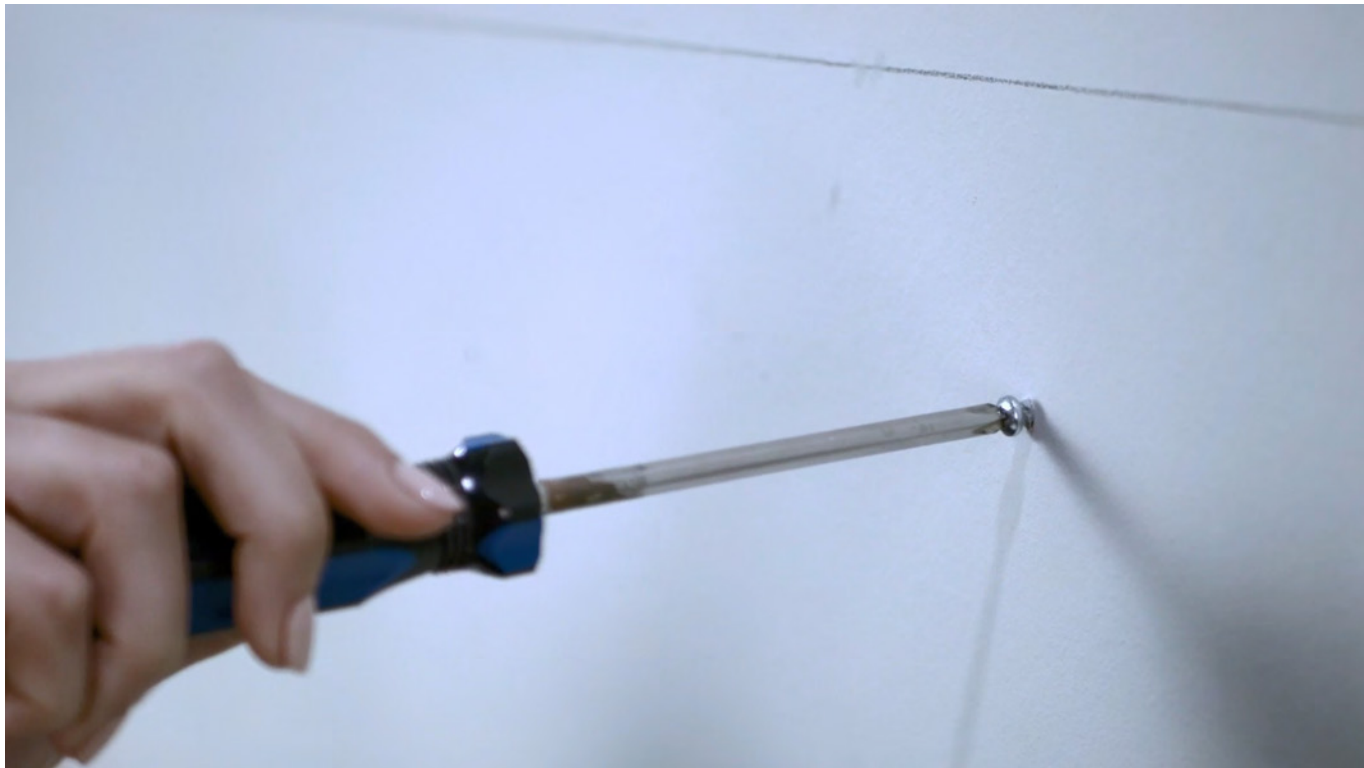


Step 2: Remove the level and lightly draw a line across the top of the panel with a pencil.

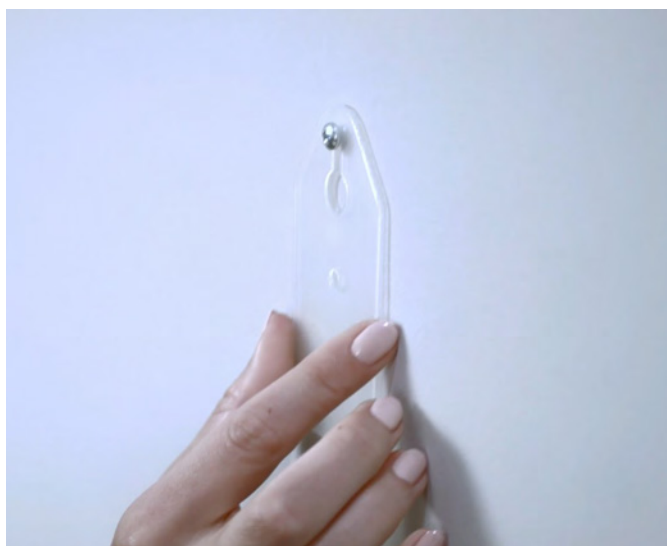


Easy Method:

Step 3: Screw the Walldog fasteners into the wall, just below the line. Make sure to leave a small 1/8" gap for the hang tab.

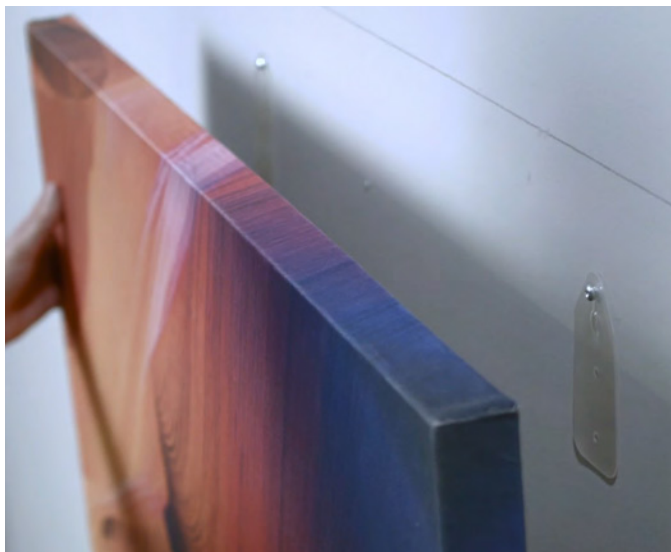


Step 4: Peel the wax backer off the hang tab, then place the tab over the screw on the wall with the sticky side facing out.



Easy Method Continued:

Step 5: Position the panel firmly into place on the wall and apply pressure to the locations of the hang tabs, so the hang tabs stick to the back of the panel.



Step 6: Remove the panel by lifting up and out from the keyholes on the tabs.

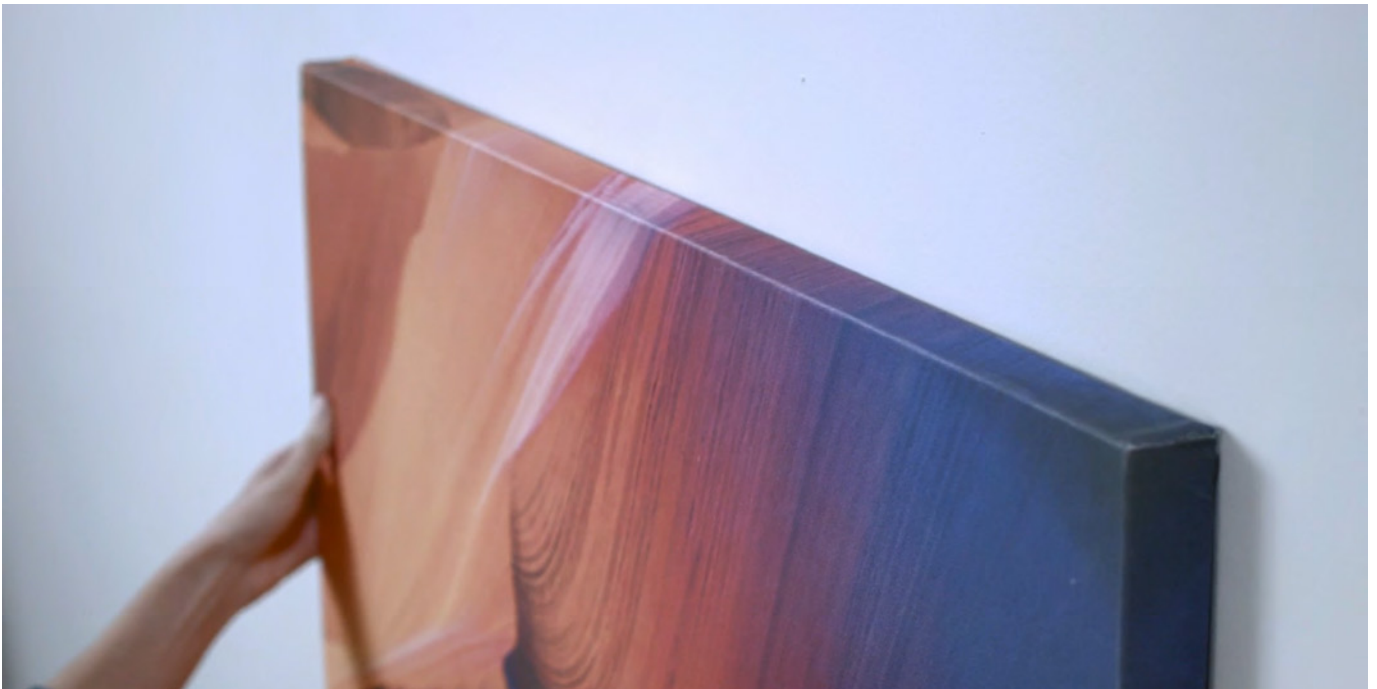


Easy Method Continued:

Step 7: Secure the hang tabs on the back of the panel with the small screws provided.



Step 8: Hang the panel on the wall, like you would a wall clock, sliding the keyholes over the screws and it will be positioned precisely where you want it.



Standard Method (measuring tape required):

Step 3 (see page 2 for steps 1 & 2): Peel the wax backer off the hang tabs, then place the hang tabs sticky side down on the back of the panel, and secure the tabs with the small screws provided.

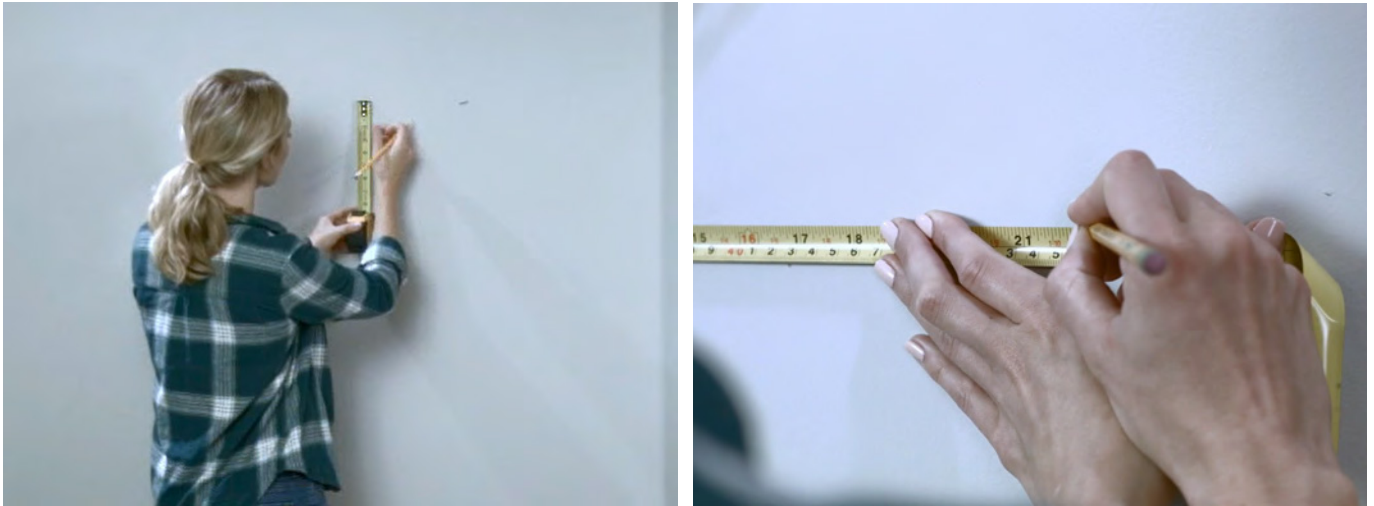


Step 4: Measure the distance between the keyholes on the hang tabs and from the top of the keyholes to the top of the panel.

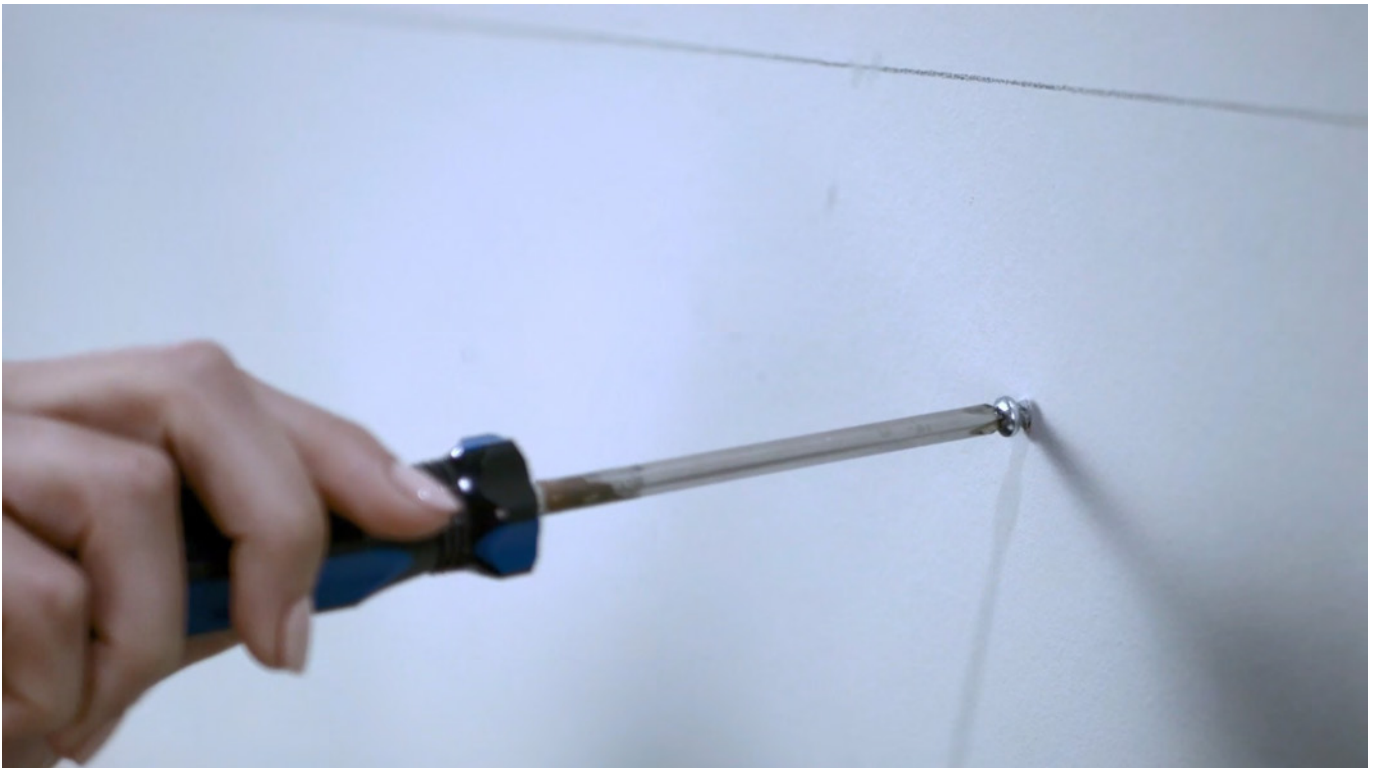


Standard Method Continued:

Step 5: Apply the same measurements taken in Step 4 to the wall, using the line created in Step 2 as a reference to the top of the panel. Mark the locations of where the keyholes will be on the wall with a pencil.

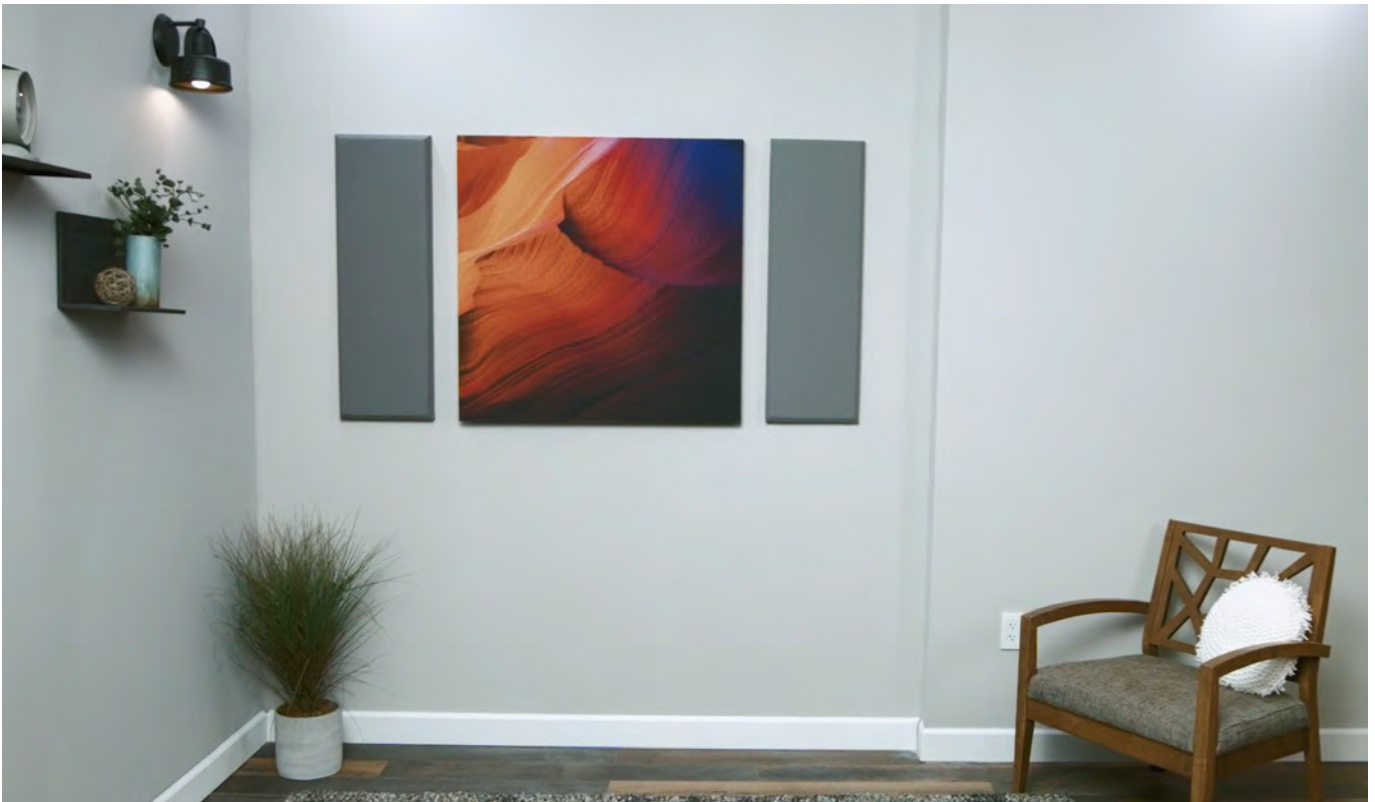
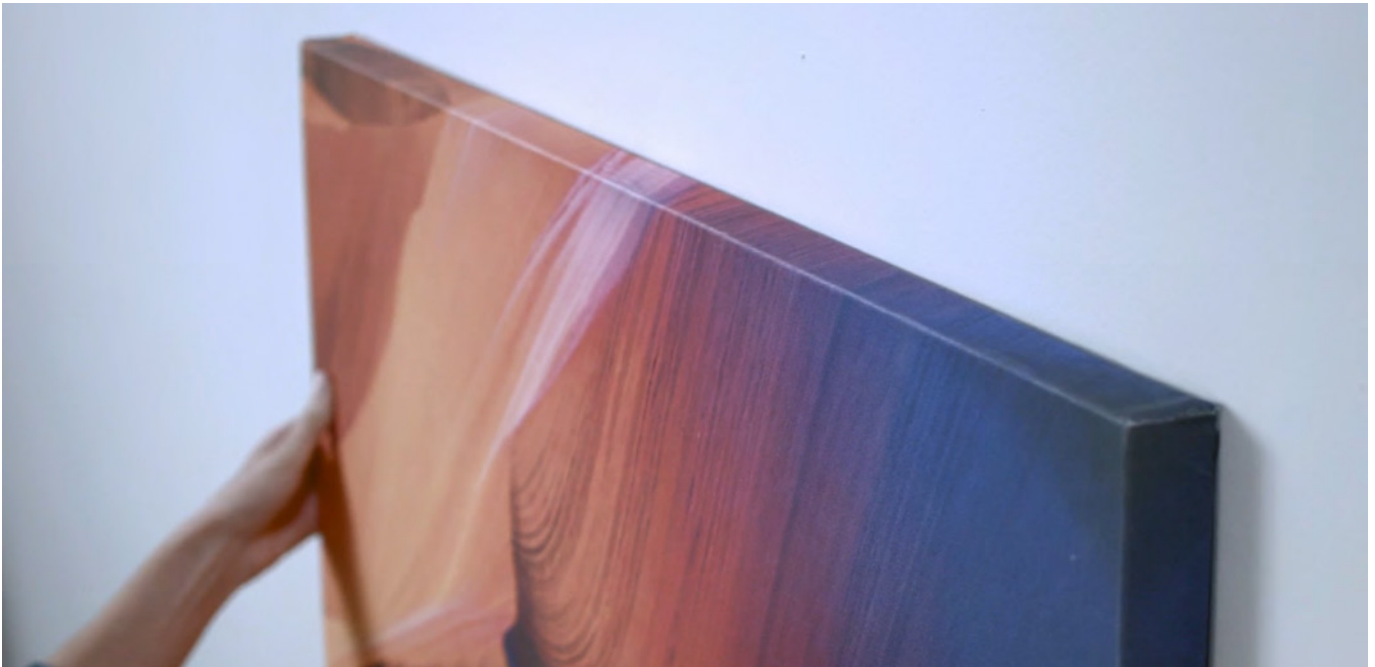


Step 6: Screw the Walldog fasteners into the wall, just below the line. Make sure to leave a small 1/8" gap for the hang tabs.



Standard Method Continued:

Step 7: Hang the panel on the wall, like you would a wall clock, sliding the keyholes over the screws.

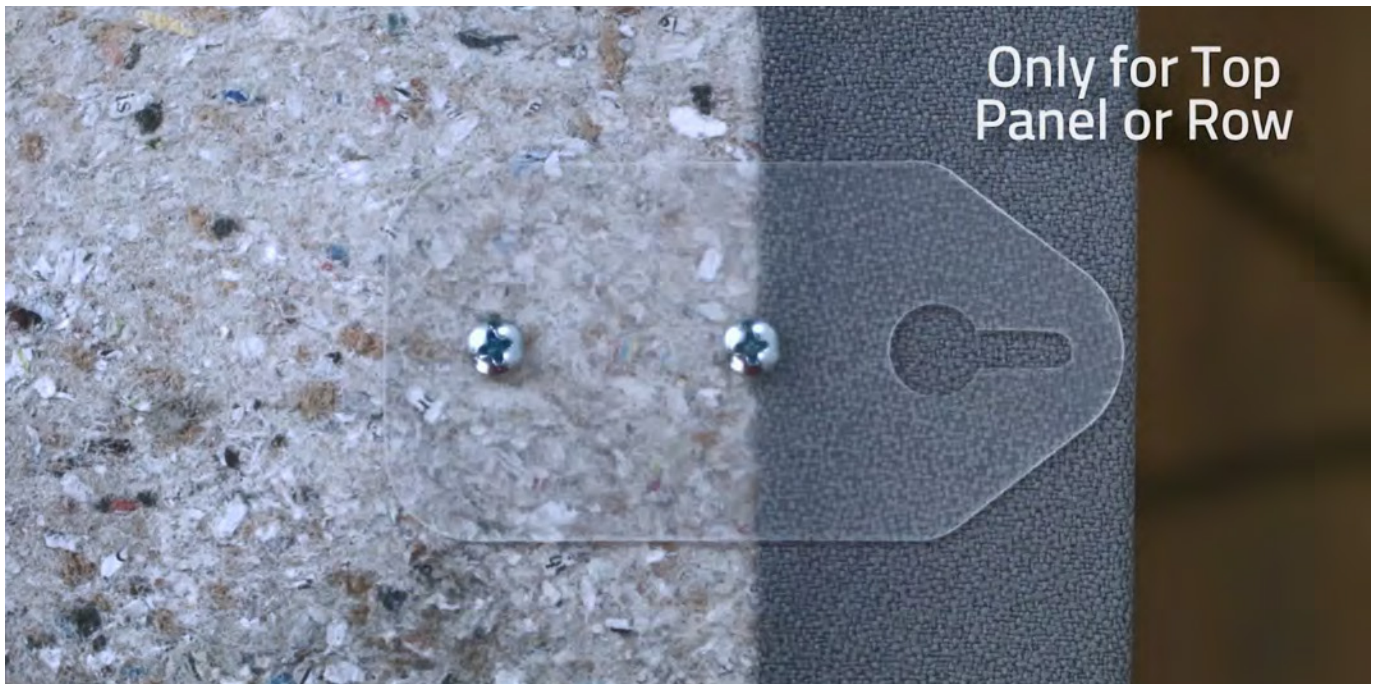


Stacked Method (measuring tape required):

Step 3 (see page 2 for steps 1 & 2): Use Steps 1 & 2 for the first row only. For all panels except for the one(s) for the top row, peel the wax backer off the hang tabs, then place the hang tabs sticky side down on the back of the panel just above the top edge, and secure the tabs with the small screws provided.



For the panel(s) that will be used for the top row, install the hang tabs just below the top edge. Install the hang tabs with equal distances from the top edge of the panel(s).



Stacked Method Continued:

Step 4: Place the first panel for the bottom row on the wall, using the level line drawn in Step 2 as a reference to the top of the panel. Screw the Walldog fasteners into the wall through the top of the keyholes in the hang tabs.



Step 5 (optional): For additional panels before the top row, rest the panels on top of the lower row and repeat the instruction in the last sentence of Step 4.



Stacked Method Continued:

Step 6: For the panel(s) for the top row, measure the distance between the keyholes on the hang tabs and the distance from the bottom of the panel(s) to nearly the top of the keyholes on the tabs. Then, apply the same measurements to the wall and mark the locations of where the keyholes will be on the wall with a pencil.



Step 7: For the top panel(s), screw the Walldog fasteners into the wall and make sure to leave a small 1/8" gap for the hang tabs.



Stacked Method Continued:

Step 8: Hang the top row panel(s) on the wall, like you would a wall clock, sliding the keyholes over the screws.



Keyhole Plate Hanging Method Installation Instructions:

FABRIC & ACOUSTIC IMAGE PANELS

Keyhole plate mounting is a very secure method to attach panels to walls or an angled section of a ceiling. The keyhole plates come preattached to the panels.



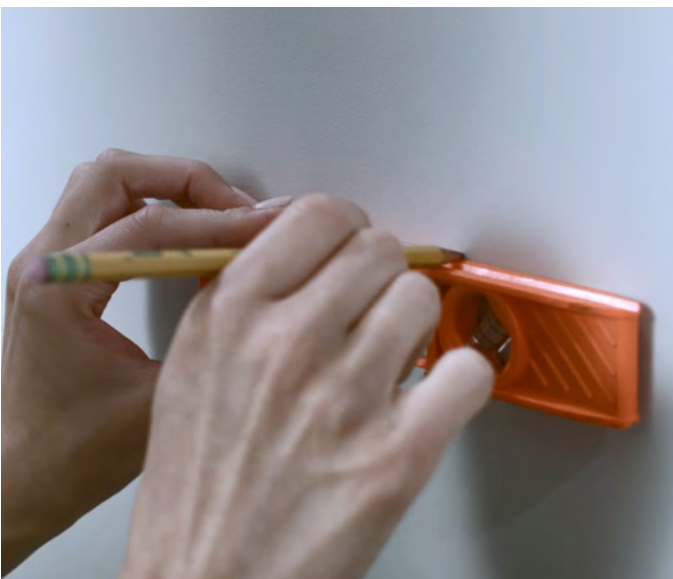
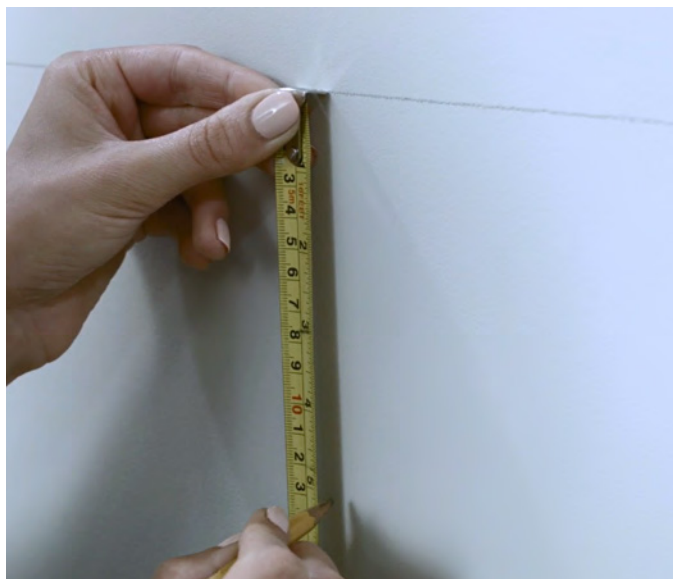
Items needed: 4 included included screws for the keyhole plates, a level, a measuring tape, a pencil, and a Phillips head screwdriver.



Step 1: Position the panel on the wall where you want the top of the panel to be. Then, use a level and draw a line on the wall across the top of the panel with a pencil.



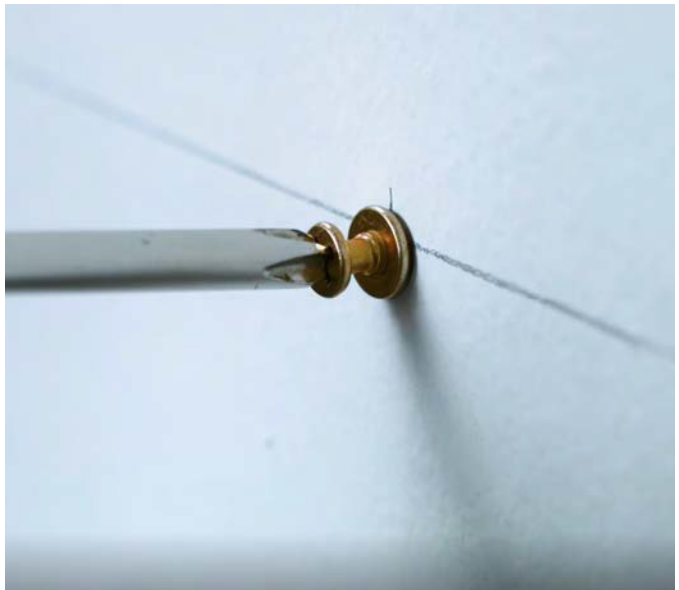
Step 2: Measure 5 1/4" down from the line and make another level line.



Step 3: Measure the distance between the keyholes on the panels.



Step 4: Using the measurements between the keyholes, mark the locations on the wall with a pencil starting on the level line created in Step 2. Then, screw the double headed screws into the marked locations.



Step 5: Hang the panel by sliding the keyhole plates over the double headed screws in the wall.



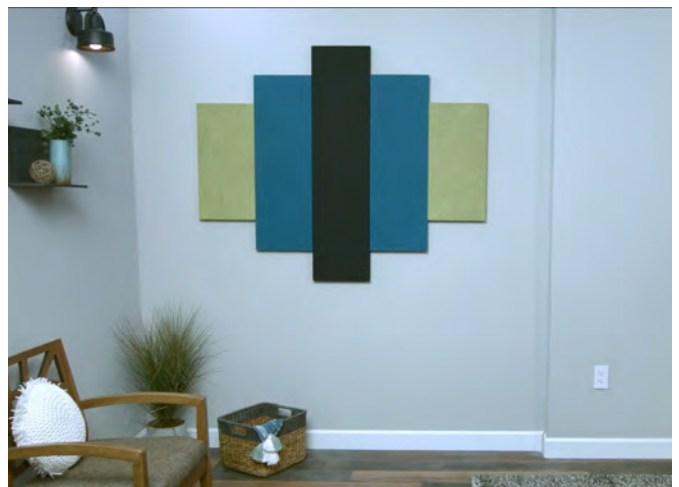
Loctite® Power Grab® Express Heavy Duty Installation Instructions:

ACOUSTIC PANELS (Fabric, Image, & AcoustiColor®)
ACOUSTICOLOR SHAPES
AUDIMUTE STRATA®
ACOUSTIWOOD®, ACOUSTISTONE®, ACOUSTIFELT™

Step 1: Apply 2" diameter dabs of adhesive on a panel, no more than 2' apart.



Step 2: Press firmly into place and you're done!





Mitch Zlotnik
Founder & President of Audimute

Our founder Mitch Zlotnik loved his drums and respected his neighbors. So he invented a versatile sound absorption solution a musician could afford and a neighbor would love. Today our invention, eco-C-tex® is the key ingredient in a versatile suite of sound absorption and sound proofing solutions. Proudly made from 100% recycled materials, Audimute products are revolutionizing the way people experience work, worship, entertainment, and their home.

1.866.505.MUTE
sales@audimute.com
9 am – 5 pm, Monday – Friday EST.