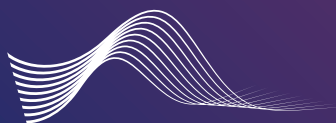


# **Audimute® Acoustic Partitions - Hanging Room Dividers**



**AUDIMUTE™**  
sound management solutions



# ACOUSTIC PARTITIONS

# ACOUSTIC PARTITIONS - HANGING ROOM DIVIDERS

---

**Audimute's Acoustic Partitions are an ideal solution for dividing spaces and absorbing sound.**

Our partitions come standard with Guilford of Maine's acoustical fabrics.

The fabric is affixed to the front and back of each partition and the edges are coated with black paint. The partitions are designed to be hung from a ceiling using your choice of mounting cable connected to the 2 D-Rings attached to the powder coated aluminum hanging bracket on the top of each partition. Compared to non-hanging partitions or room dividers, Audimute's solution cannot be knocked over and there is no tripping hazard.

Audimute's acoustic partitions are made from our trademarked eco-C-tex® acoustic material and are the greenest alternative to traditional foam products. These acoustic partitions work great in offices, restaurants, gymnasiums, school cafeterias, and any other application where dividing a space and/or improving sound quality is needed.



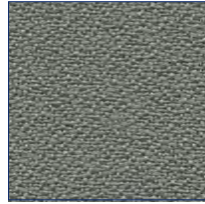
# ACOUSTIC PARTITIONS: ANCHORAGE FABRICS

---

Create your own distinctive space with our Anchorage line of fabrics from Guilford of Maine.



White



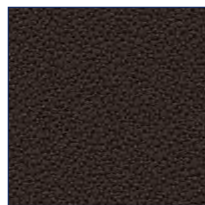
Asteroid



Graphite



Onyx



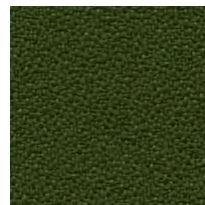
Coffee Bean



Vanilla



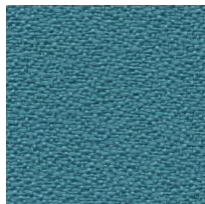
Birch



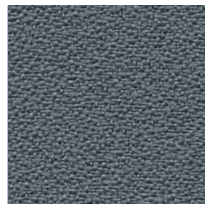
Fern



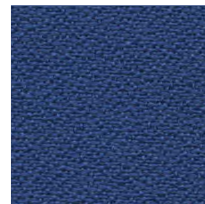
Green Apple



Waterfall



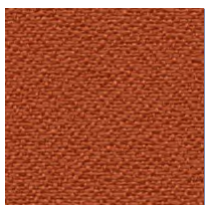
Quarry Blue



Lapis



Lemon



Pumpkin



Geranium



Orchid

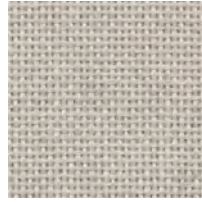
# ACOUSTIC PARTITIONS: FR701 & SYNOPSIS FABRICS

The FR701 & Synopsis fabrics from Guilford of Maine are bleach-cleanable.

## FR701 FABRICS:



Eggshell



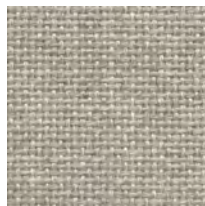
Pearl



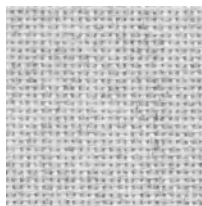
Quartz



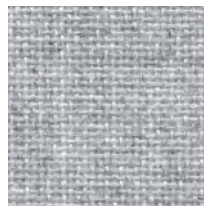
Opal



Cement Mix



Silver Papier



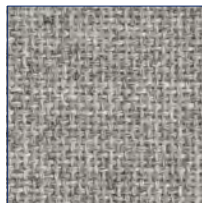
Blue Papier



Wedgewood



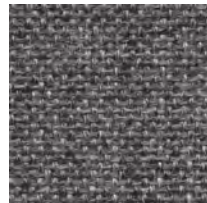
Silver Neutral



Grey Mix



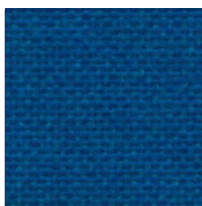
Flannel



Medium Grey



Chartreuse



Sapphire



Red

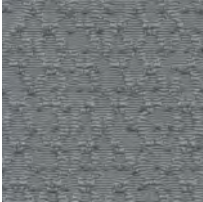


Black

# ACOUSTIC PARTITIONS: FR701 & SYNOPSIS FABRICS

The FR701 & Synopsis fabrics from Guilford of Maine are bleach-cleanable.

## SYNOPSIS FABRICS:



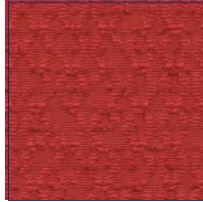
Ash



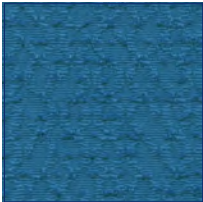
Taupe



Bisque



Poppy



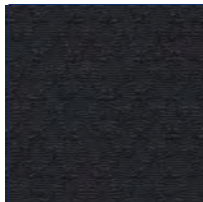
Cerulean



Blue Marine



Flannel



Ebony



# SPECIFICATIONS

# ACOUSTIC PARTITIONS: SPECIFICATIONS

<b>CONTENT</b>	Acoustic substrate: P.E.T. 10% - 30%, Recycled Cotton 70% - 90%, Fabric: Recycled polyester Powder Coated Aluminum Hanging Bracket and Hardware
<b>COMPONENTS</b>	Acoustic Substrate, 2 D-Rings, Mounting Bracket, Fabric/Coating
<b>THICKNESS</b>	1-1/2"
<b>THICKNESS TOLERANCE</b>	+ -1/4"
<b>SIZES</b>	4' x 4', 4' x 5', 4' x 6' (custom sizes of 4' x 7' and 4' x 8' available upon request)
<b>FINISH OPTIONS</b>	Fabric, Images, AcoustiColor® Coating
<b>APPLICATION</b>	Indoor Ceiling
<b>CUTTING / ALTERATIONS</b>	Table Saw with Metal Cutoff Blade, Jig Saw with T-Shank Scalloped Knife Blade, Foam Saw, Utility Knife
<b>INSTALLATION</b>	2 D-Rings (included), Cable (not included)
<b>HANDLING / CARE</b>	When handling, make sure hands are clean and oil free. Vacuuming or light brushing is recommended to prevent dust and soil buildup.
<b>STORAGE</b>	Acoustic Partitions - Hanging Room Dividers must be stored in a dry place. Delivery Packaging is not ideal for storage purposes. We advise placing a dust cover over the product when packaging is removed if the product will be stored. The partitions should be stored flat and should not be stacked. We strongly recommended to avoid storage longer than 6 months. Do not allow water to come into direct contact with the material during storage. Store in a cool dry space 55°F - 85°F.
<b>FIRE RATING</b>	ASTM E84 Class A.
<b>COLOR FASTNESS TO LIGHT</b>	Grade 4 min. at 40 hours
<b>COLOR FASTNESS TO CROCK</b>	Grade 4 min. dry & Grade 3 min. wet
<b>ACOUSTIC RATING</b>	NRC: 1-1/2"= 0.95

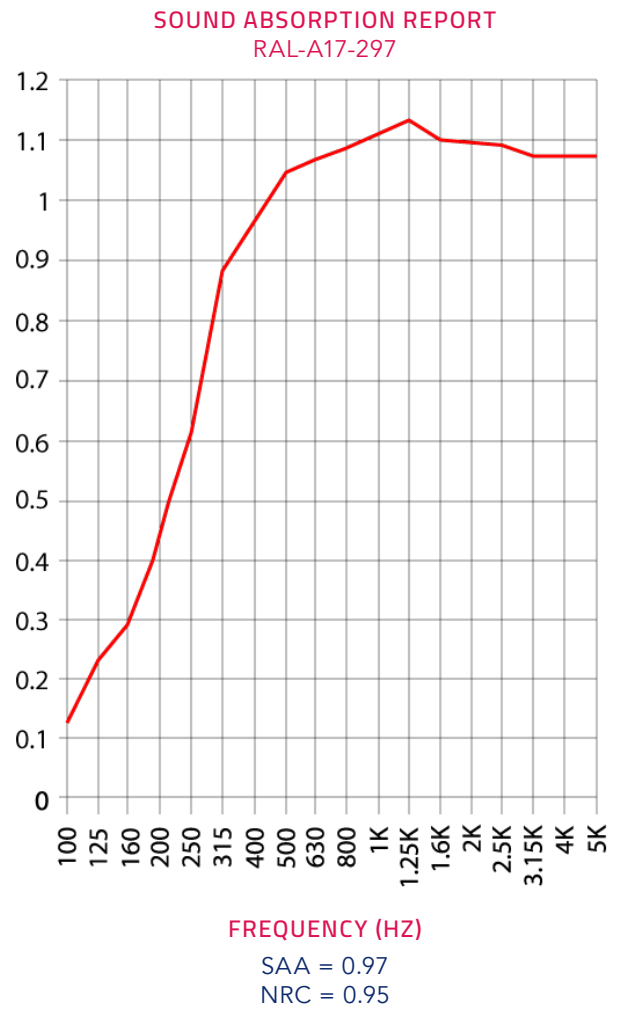


# ACOUSTIC PARTITIONS: ACOUSTIC TESTING

## Test Report

The test report quotes the frequency dependent sound absorption data as well as the single number ratings. Data taken from Test Report RAL-A17-297 conducted by Riverbank Acoustical Laboratories. Complete test results are available upon request.

FREQUENCY (HZ)	ABSORPTION COEFFICIENT
100	0.13
125	0.23
160	0.29
200	0.43
250	0.62
315	0.87
400	0.96
500	1.04
630	1.07
800	1.09
1000	1.11
1250	1.14
1600	1.10
2000	1.10
2500	1.09
3150	1.06
4000	1.07
5000	1.06





**Mitch Zlotnik**  
Founder & President of Audimute

Our founder Mitch Zlotnik loved his drums and respected his neighbors. So he invented a versatile sound absorption solution a musician could afford and a neighbor would love. Today our invention, eco-C-tex® is the key ingredient in a versatile suite of sound absorption and sound proofing solutions. Proudly made from 100% recycled materials, Audimute products are revolutionizing the way people experience work, worship, entertainment, and their home.

---

1.866.505.MUTE  
sales@audimute.com  
9 am – 5 pm, Monday – Friday EST.