

Audimute® Ceiling Truss Baffle

Available sizes :

- Widths: 2',3',4'
- Heights : Determined by truss size.

Color Options:

- Available in any Sherwin Williams color.

Manufactured and assembled in the U.S.A.



Acoustical Performance

- Absorption product
- NRC of .95
- Excellent for mid to high range frequencies absorption



Flammability

- Class A fire rated (ASTM E-84)



Material Composition

- Blend of recycled cotton and cellulose fibers
- Made with 1/10 of the energy required to make traditional fiberglass panels



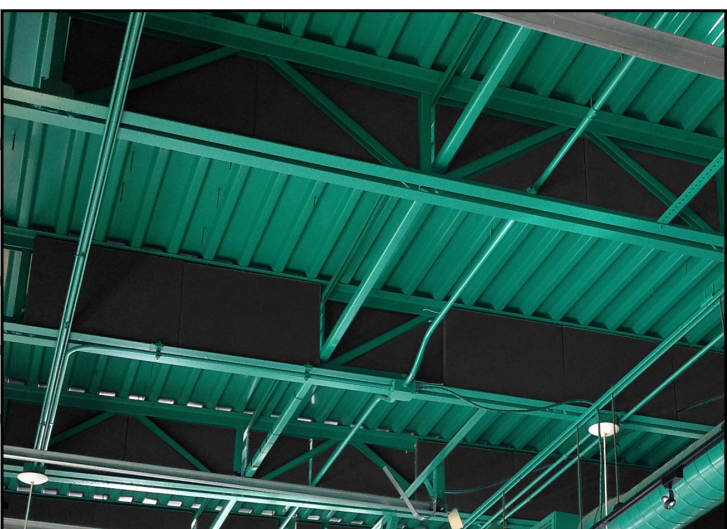
Health

- Non-toxic
- Non-carcinogenic
- Low emission product

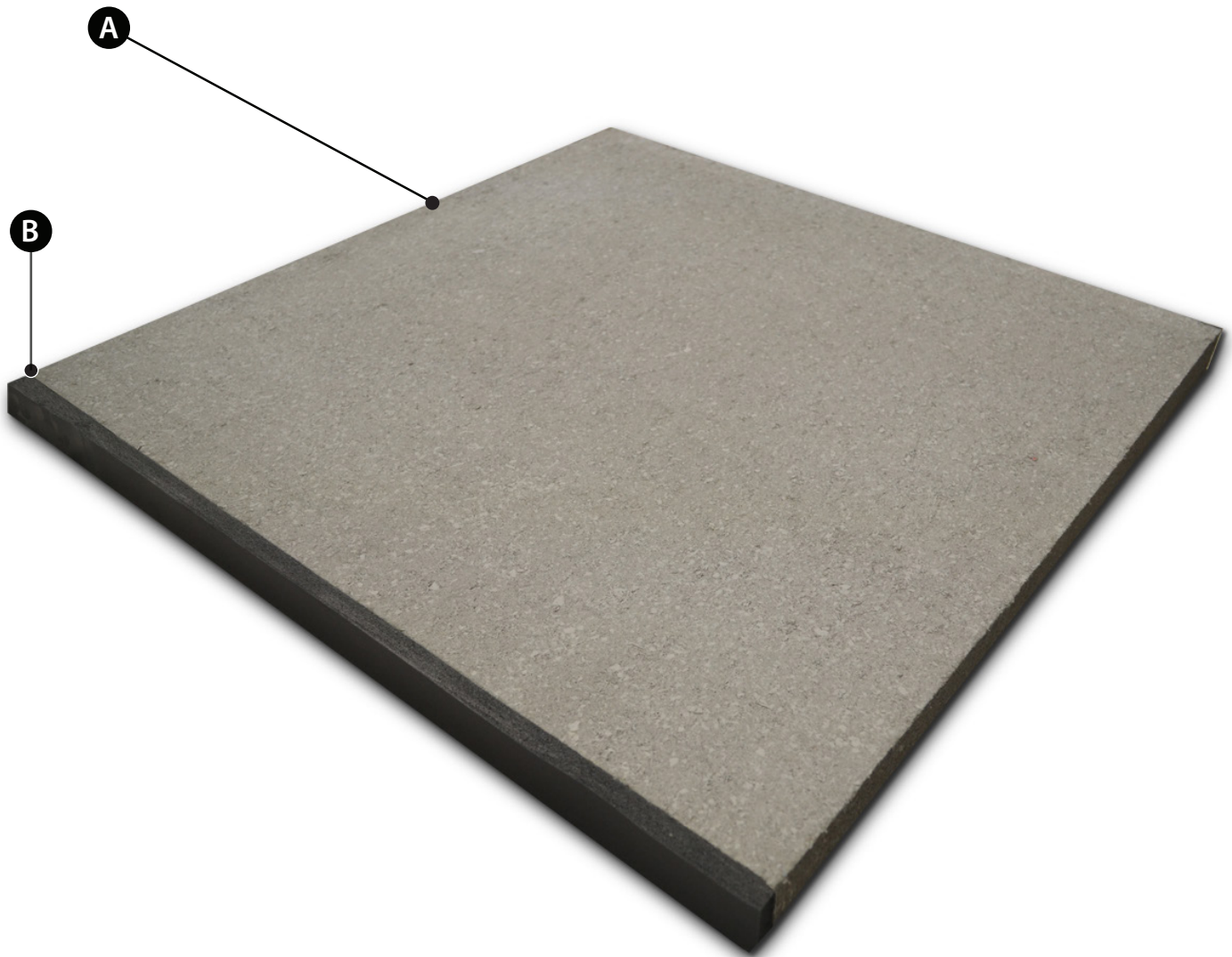


Installation Hardware

- Equipped with gasket for easy insertion into any truss.



Audimute® Ceiling Truss Baffle



Features:

- A** eco-C-tex® - 1/2" acoustic absorption material.
- B** Easy Hang Gasket - Gasket for easy installation.

* all components made and assembled in the U.S.A.