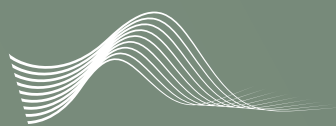


Audimute[®] isolé[®]



AUDIMUTE[®]
sound management solutions

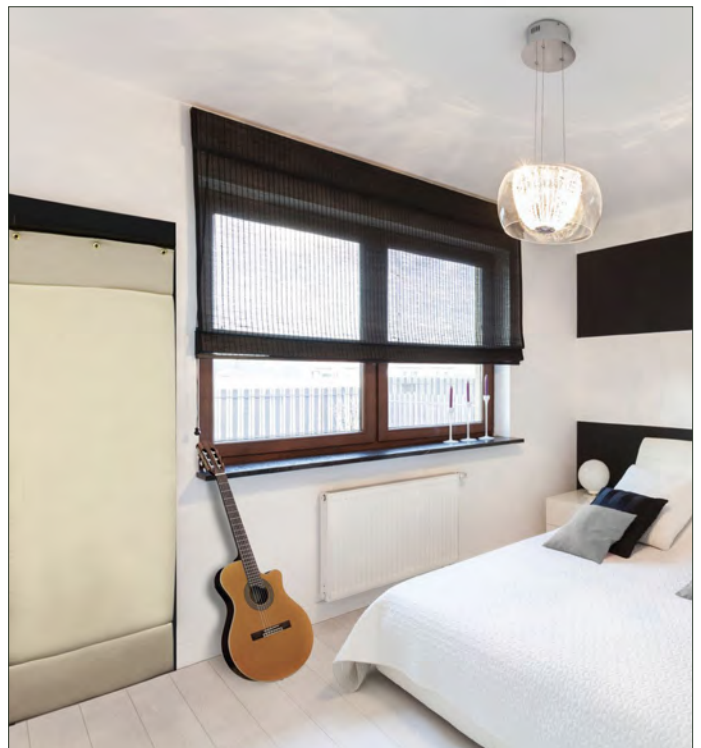


AUDIMUTE ISOLÉ®

AUDIMUTE ISOLÉ®

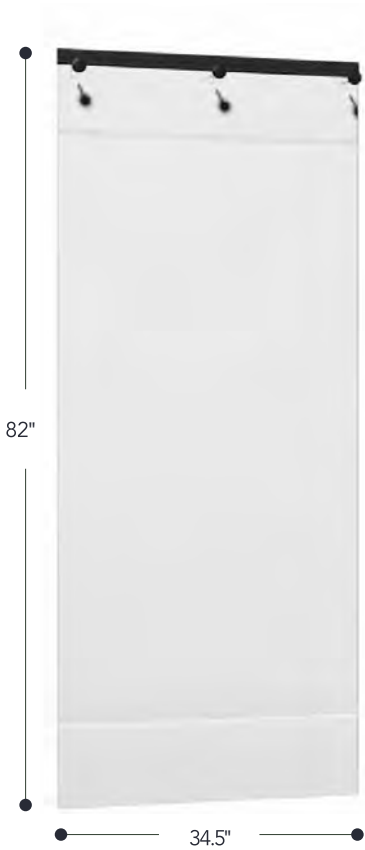
Audimute isolé incorporates sound absorption and sound blocking materials into a single hanging solution.

Audimute isolé is designed to be a 2-in-1 portable sound solution for soundproofing and sound absorption. One side of the isolé is a 0.75 NRC sound absorption panel used to prevent sound reflections and reverberation within a room. The opposite side is a dense layer of 1/16" Mass Loaded Vinyl (MLV), which is used to block sound from passing through the isolé. The combination of materials makes isolé ideal for absorbing and blocking sound that would otherwise reflect and escape through doors, windows, vents, and other weaknesses in the structure.

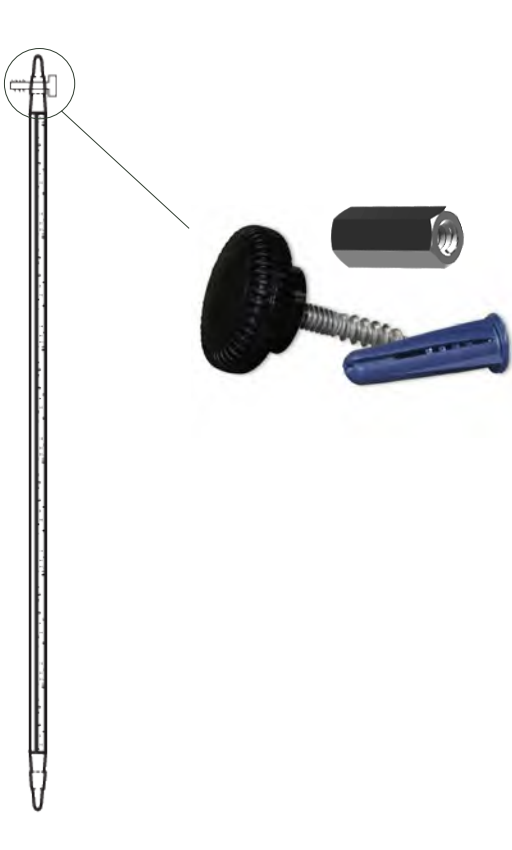


AUDIMUTE ISOLÉ®

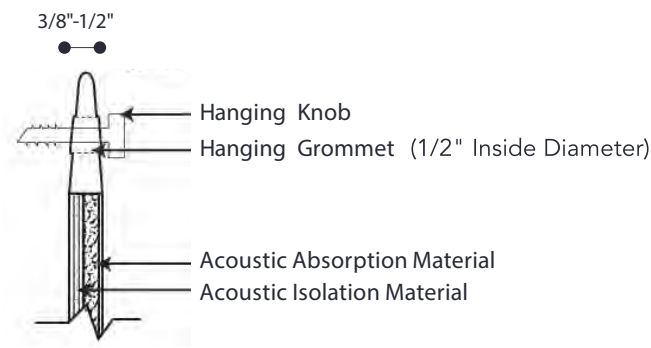
AUDIMUTE ISOLÉ SIZE



AUDIMUTE ISOLÉ QUICK HANGING KNOB & SCREW



HANGING KNOB DETAIL



AUDIMUTE ISOLÉ[®]: SPECIFICATIONS

| | |
|---------------------|--|
| CONTENT | Acoustic Absorption Substrate: P.E.T. 10% - 30%, Recycled Cotton 70% - 90% Acoustic Blocking Substrate: 1/16" Mass Loaded Vinyl (MLV) Shell Fabrics: 100% Cotton |
| COMPONENTS | Acoustic Substrates, Shell Fabrics, Hanging Knobs |
| THICKNESS | 3/8"-1/2" |
| THICKNESS TOLERANCE | +1/8" |
| SIZES & WEIGHTS | 82" x 34.5" - Approx. 18 Lbs. |
| FINISH OPTIONS | Snow, Bone, Black, Steel |
| APPLICATION | Indoor Wall, Window, Door |
| INSTALLATION | Hanging Knob. The interior diameter of each grommet hole is 1/2". |
| HANDLING / CARE | When handling isolé, make sure hands are clean and oil-free. Vacuuming or light brushing is recommended to prevent dust and soil buildup. |
| STORAGE | Audimute isolé must be stored in a dry place. Delivery packaging is not ideal for storage purposes. It is advised to place a polyethylene cover over the stack when packaging is removed, to reduce moisture absorption. It is strongly recommended to avoid storage longer than six months. Do not allow water to come into direct contact with the material during storage. Store in a cool dry space 55°F - 85°F. |
| ACOUSTIC RATING | NRC: 0.75 STC: 20 |

AUDIMUTE ISOLÉ®: COLOR OPTIONS



Snow



Bone



Black



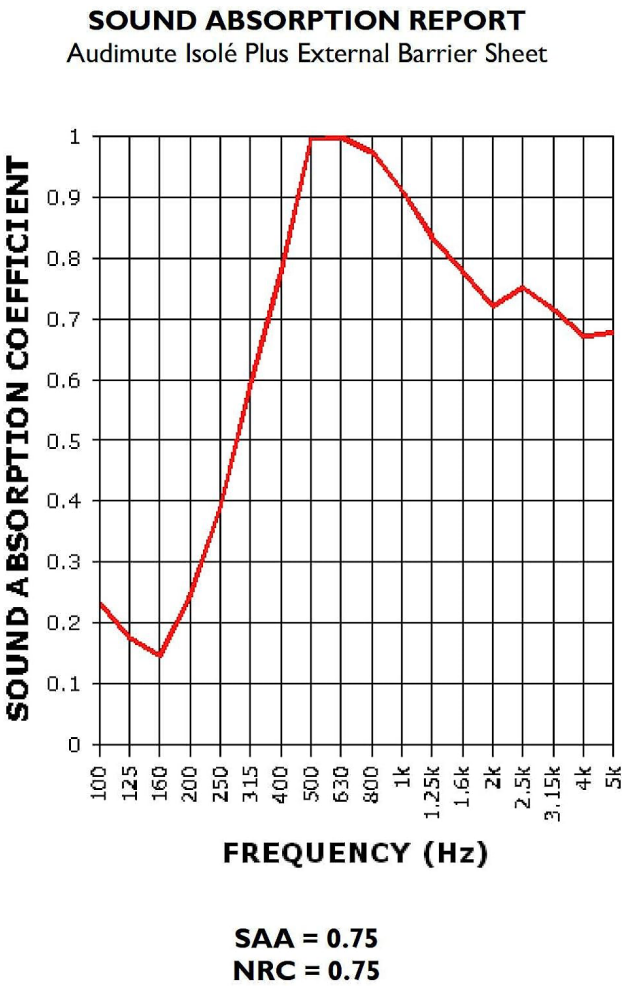
Steel

AUDIMUTE ISOLÉ®: ACOUSTIC TESTING

Audimute isolé Test Report

The test report quotes the frequency dependent sound absorption data as well as the single number ratings. Data taken from Test Report RAL-A13-340 conducted by Riverbank Acoustical Laboratories. Complete test results are available upon request.

| FREQUENCY (HZ) | ABSORPTION COEFFICIENT |
|----------------|------------------------|
| 100 | 0.23 |
| 125 | 0.17 |
| 160 | 0.05 |
| 200 | 0.24 |
| 250 | 0.39 |
| 315 | 0.59 |
| 400 | 0.77 |
| 500 | 1.00 |
| 630 | 1.00 |
| 800 | 0.98 |
| 1000 | 0.91 |
| 1250 | 0.84 |
| 1600 | 0.78 |
| 2000 | 0.72 |
| 2500 | 0.75 |
| 3150 | 0.72 |
| 4000 | 0.67 |
| 5000 | 0.68 |



Acoustical Properties

Vinaflex® type VN Noise Barrier provides the following noise reduction.

Noise transmission loss (dB)/Frequency (Hz)

| | | | | | | | |
|----------------|-----|-----|-----|------|------|------|-----|
| Hz | 125 | 250 | 500 | 1000 | 2000 | 4000 | STC |
| dB by density: | | | | | | | |
| VN-050 | 8 | 13 | 17 | 22 | 27 | 31 | 20 |

Quick Hanging Knob & Screw Installation Instructions:

ISOLÉ SOUND BARRIER SHEET

isolé is to be hung from the 3 metal grommets located along the top of the sheet with the Audimute tag on the sheet (the absorption side) facing the sound to manage.



Items needed:

isolé sheet, 3 included quick hanging knobs with hanger bolts (screws), coupling nut, tape measure, level, marker, power drill with a 11/64" drill bit and a 5/16" nut driver bit.



Plan to hang isolé inside or outside the room depending on the source of the sound to block or absorb.



NOTE: You may have to mount isolé to the framing above the door.



Choose one of two mounting positions:
at the top of the door OR above, into the woodwork.

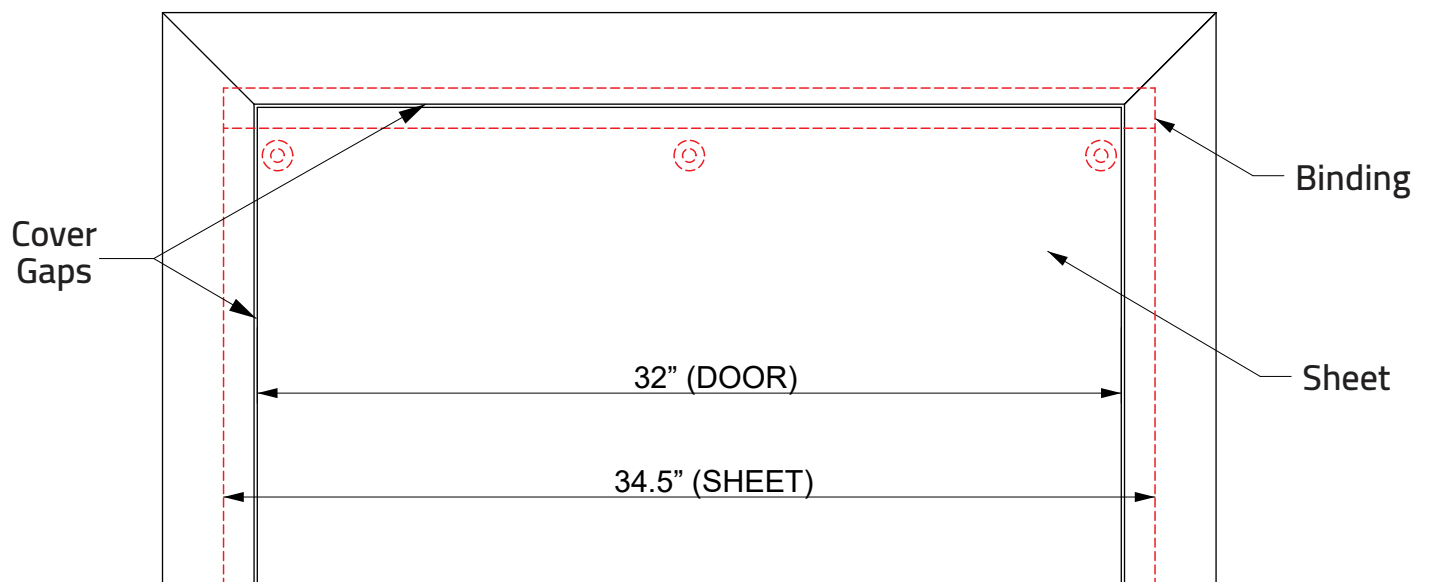
BEST: Mount to top of door, if door opens toward sheet.



OPTIONAL: Mount to framing above door, if door opens away from sheet.

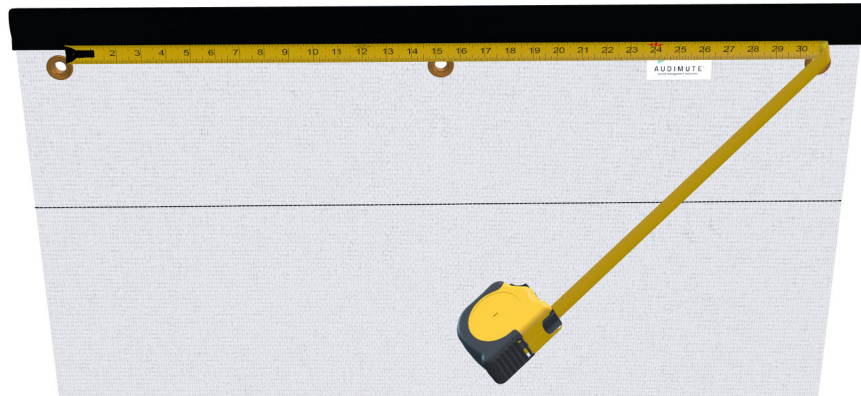


Proper placement on door should cover gaps all around door frame as illustrated below.
To seal off gaps around the door, add an [Audimute Acoustic Door Seal Kit](#).

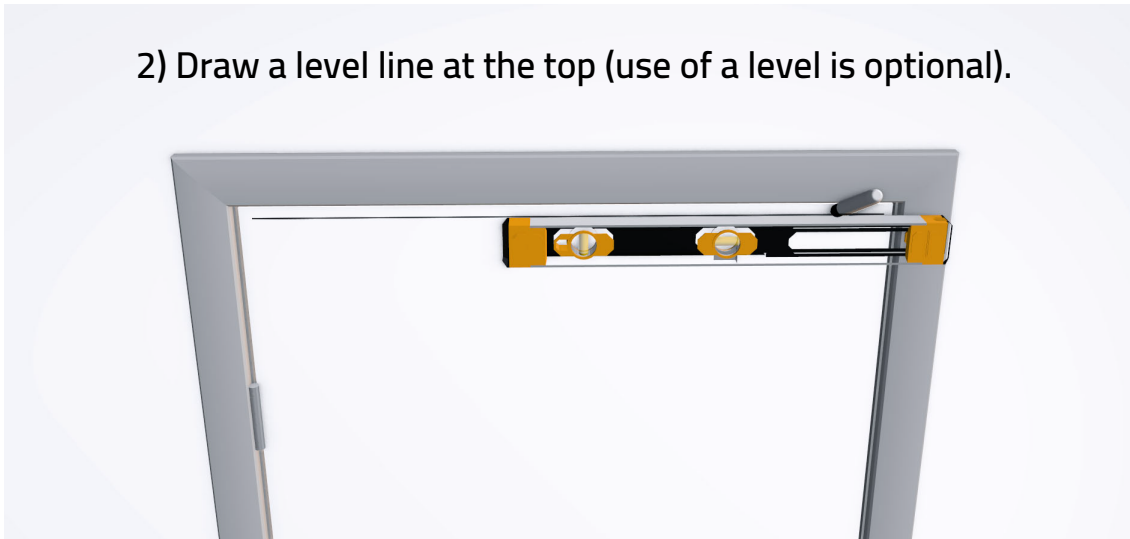


To install isolé correctly onto a door or door frame:

1) Measure the distance between grommets.



2) Draw a level line at the top (use of a level is optional).



3) Then, mark the locations of the grommet holes.

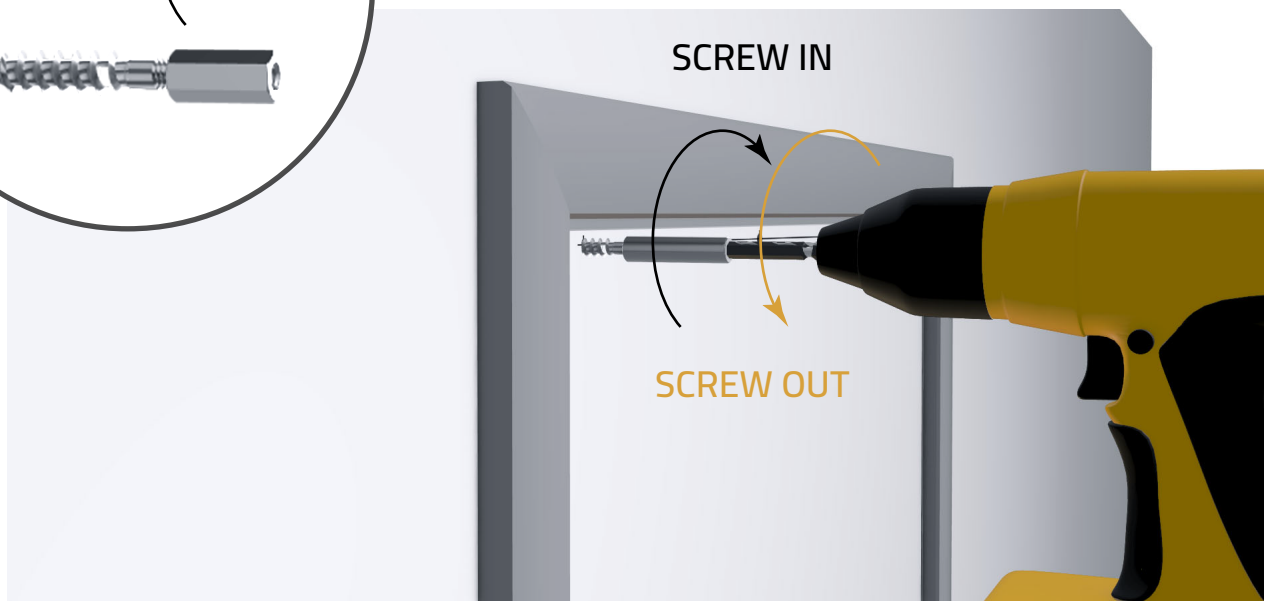
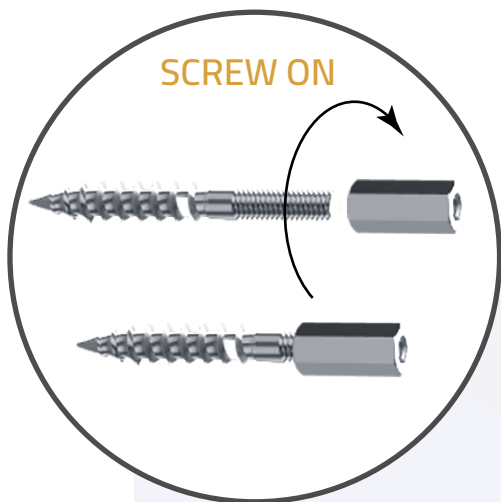


4) Drill $1\frac{1}{64}$ " holes in the three marked locations.

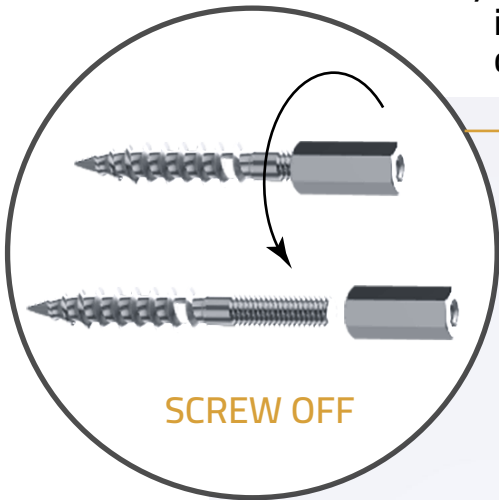


5) Thread the coupling nut onto the hanger bolt. Drive the hanger bolt completely in with the coupling nut.

Then, reverse the drill to remove the nut from the installed hanger bolt.



6) Repeat Step 5, using the coupling nut to screw in the remaining two hanger bolts. The nut may be discarded after installation.



NOTE: If you don't have a nut driver bit, a number of hand tools will do as well, such as:

Ratchet with a 5/16" socket



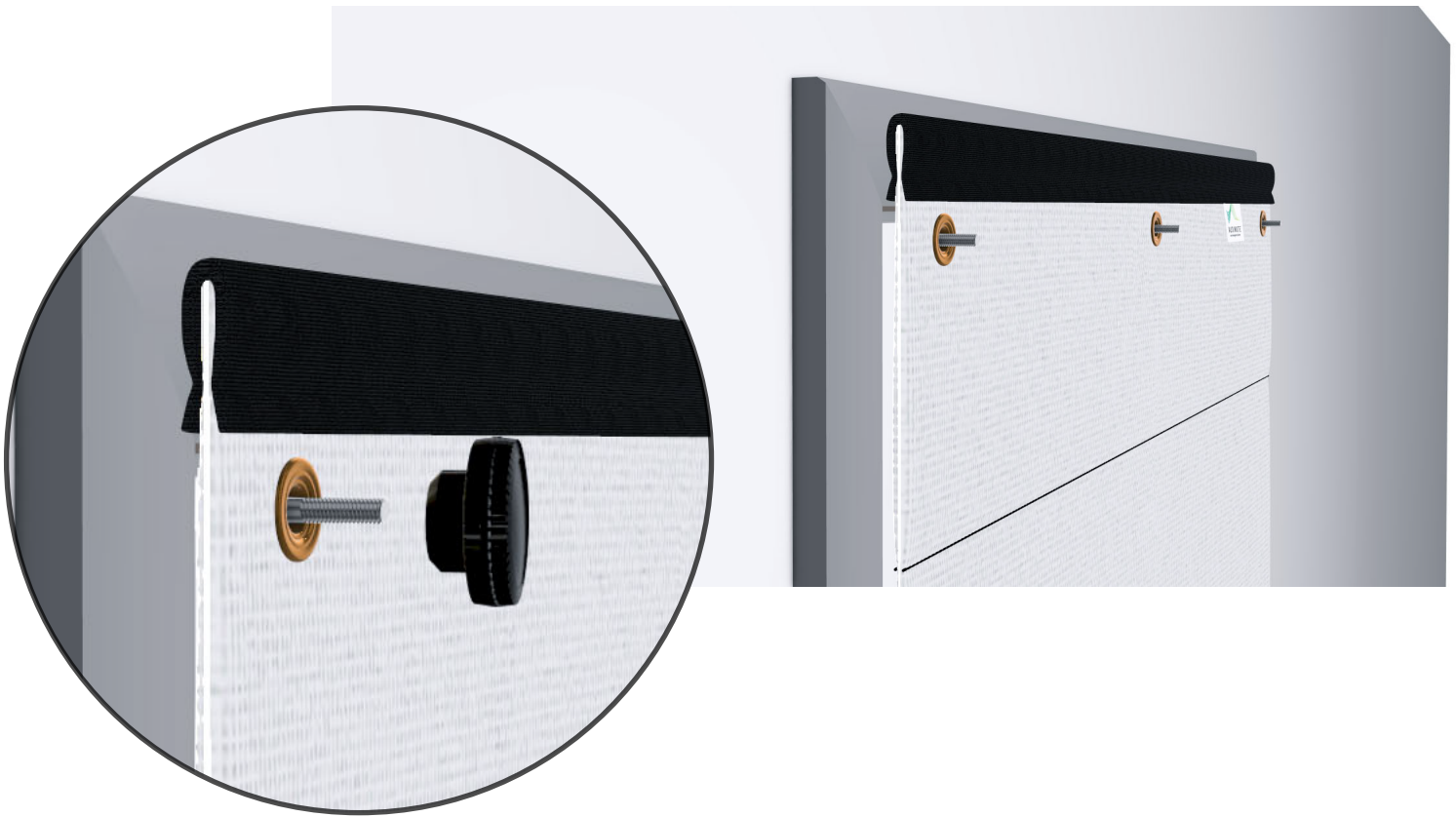
6-in-1 screwdriver



Adjustable wrench



7) Then, hang isolé with the 3 plastic screw knobs onto the installed hanger bolts.



The Audimute tag should face the sound you wish to manage



You can easily remove the 3 knobs if you need to uninstall isolé.



INSTALLATION BEST PRACTICES:

REMEMBER: To prevent damage to isolé caused by the door opening into it and to allow the door to function as intended, follow these instructions:

To block sound from getting in:

If the door opens in, mount isolé on the **door frame** facing the sound.

If the door opens out, mount isolé on **the door** facing the sound.

To block sound from getting out:

If the door opens in, mount isolé on **the door** facing the sound.

If the door opens out, mount isolé on the **door frame** facing the sound.

For best results, we recommend pairing isolé with our Acoustic Seal Door Kit. It keeps sound from getting in and out of a room via the gaps around a door.

isolé Sound Barrier Sheet will fit most standard (32" by 80") residential wooden interior doors. Custom-sized options are also available (with max dimensions of 46.5" x 144").

If properly installed over your door, isolé WILL rest over the knob/handle. We do NOT recommend cutting a hole in the sheet for the doorknob to fit through, as it will compromise the integrity and effectiveness of isolé.

Clean with a water-based cleaning agent, with foam, or with a pure water-free solvent. Vacuuming or light brushing is recommended to prevent dust and soil buildup. isolé should NOT be washed in a washing machine.

NOTE: isolé is NOT intended for use on walls or ceilings, or for use outdoors.

Please contact Audimute for further information on different installation methods.



Mitch Zlotnik
Founder & President of Audimute

Our founder Mitch Zlotnik loved his drums and respected his neighbors. So he invented a versatile sound absorption solution a musician could afford and a neighbor would love. Today our invention, eco-C-tex[®] is the key ingredient in a versatile suite of sound absorption and sound proofing solutions. Proudly made from 100% recycled materials, Audimute products are revolutionizing the way people experience work, worship, entertainment, and their home.

1.866.505.MUTE
sales@audimute.com
9 am – 5 pm, Monday – Friday EST.