

# Quick Hanging Knob & Screw Installation Instructions:

## ISOLÉ SOUND BARRIER SHEET

isolé is to be hung from the 3 metal grommets located along the top of the sheet with the Audimute tag on the sheet (the absorption side) facing the sound to manage.



### Items needed:

isolé sheet, 3 included quick hanging knobs with hanger bolts (screws), coupling nut, tape measure, level, marker, power drill with a 11/64" drill bit and a 5/16" nut driver bit.



Plan to hang isolé inside or outside the room depending on the source of the sound to block or absorb.



NOTE: You may have to mount isolé to the framing above the door.



Choose one of two mounting positions:  
at the top of the door OR above, into the woodwork.

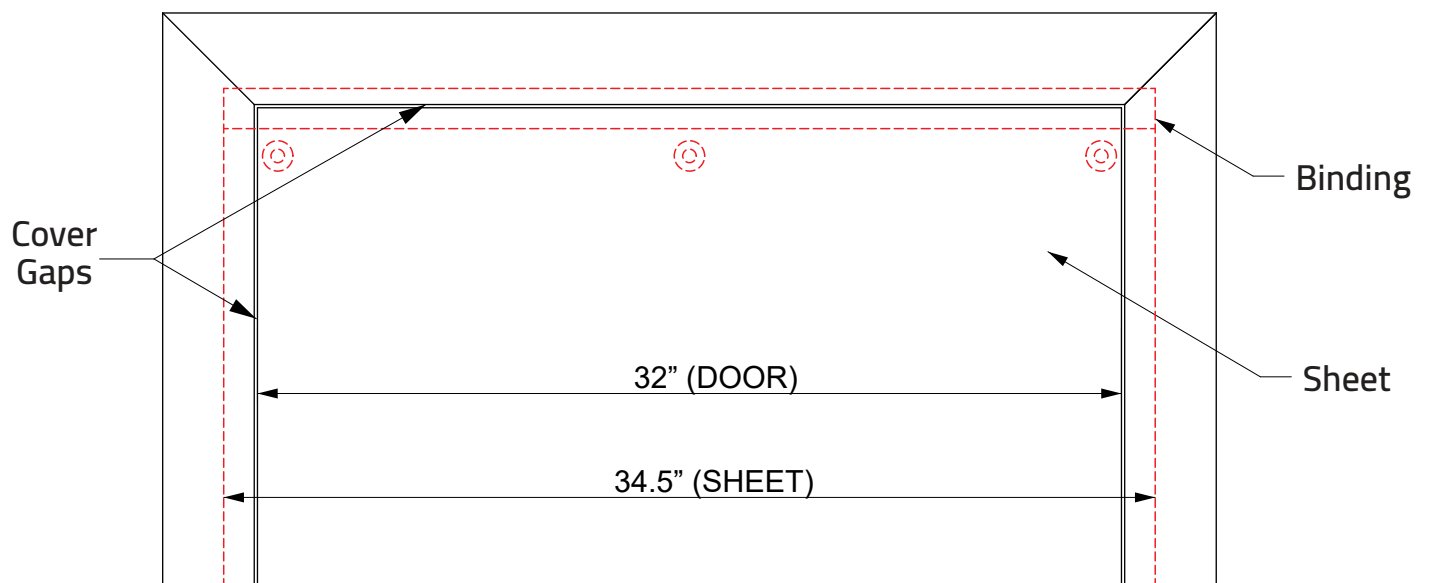
**BEST:** Mount to top of door, if door opens toward sheet.



**OPTIONAL:** Mount to framing above door, if door opens away from sheet.

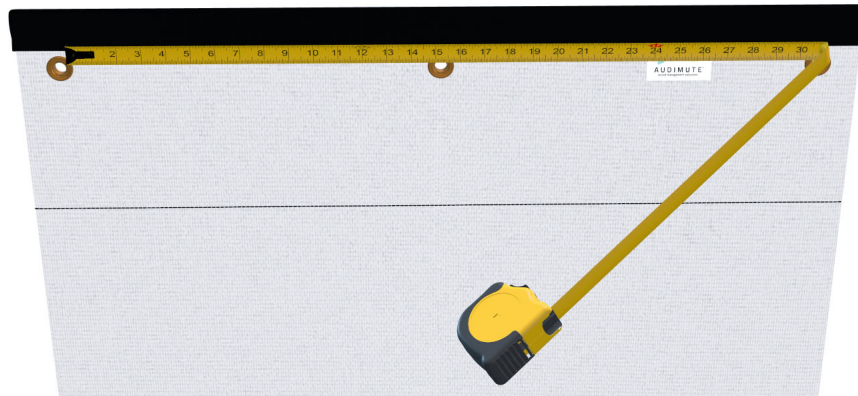


Proper placement on door should cover gaps all around door frame as illustrated below.  
To seal off gaps around the door, add an [Audimute Acoustic Door Seal Kit](#).

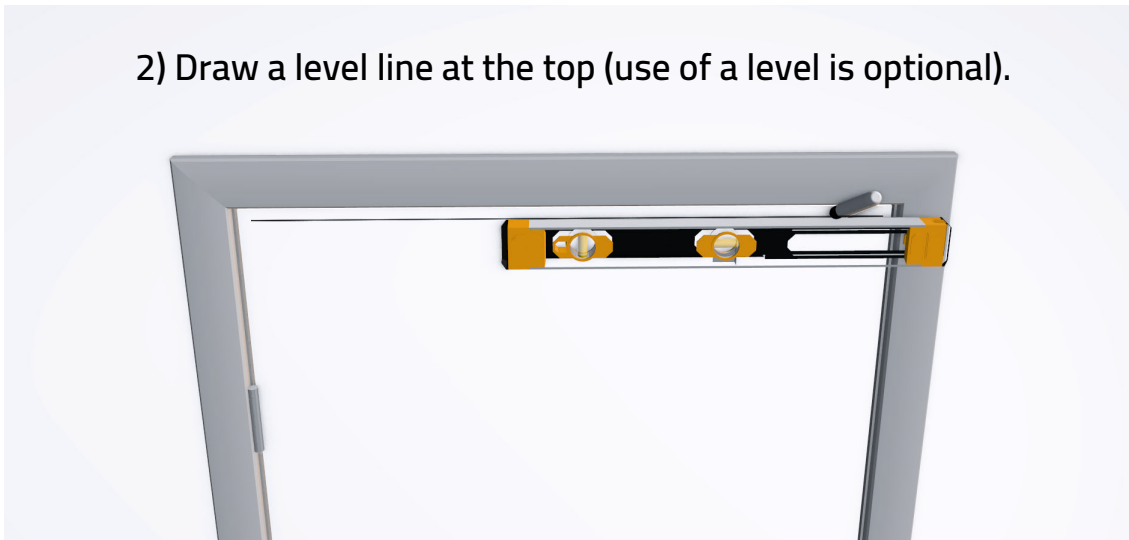


To install isolé correctly onto a door or door frame:

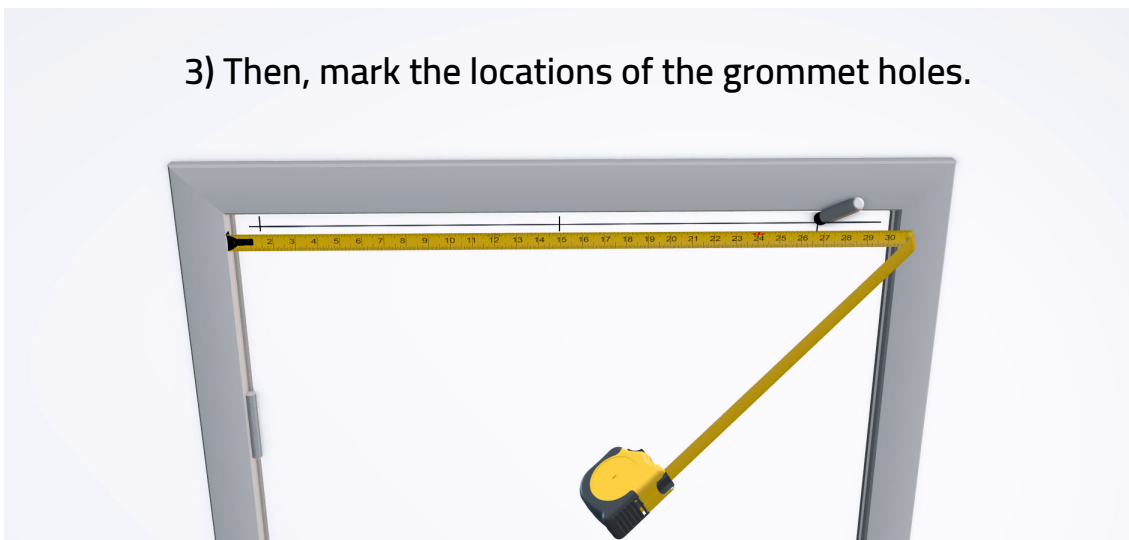
1) Measure the distance between grommets.



2) Draw a level line at the top (use of a level is optional).



3) Then, mark the locations of the grommet holes.



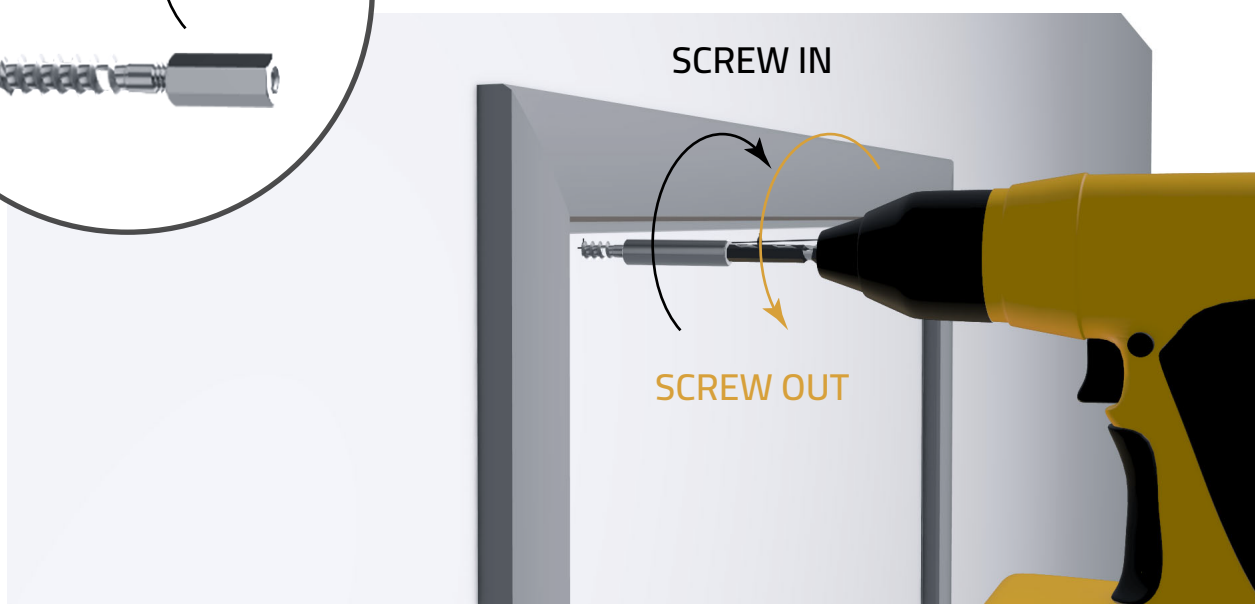
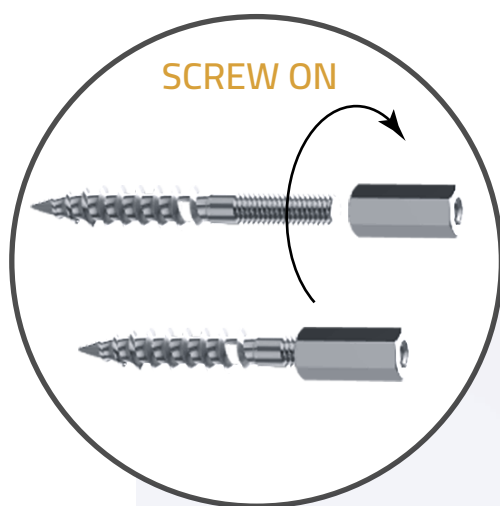


4) Drill  $11/64$ " holes in the three marked locations.

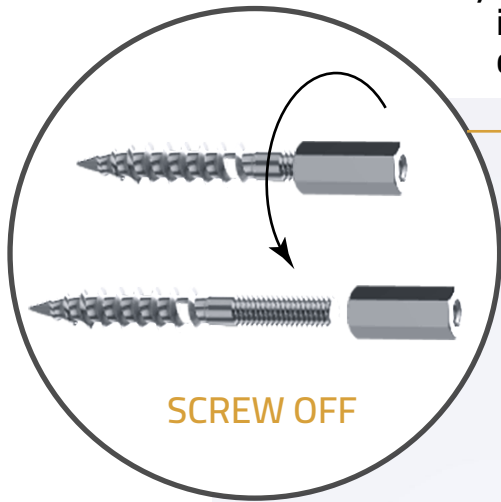


5) Thread the coupling nut onto the hanger bolt. Drive the hanger bolt completely in with the coupling nut.

Then, reverse the drill to remove the nut from the installed hanger bolt.



6) Repeat Step 5, using the coupling nut to screw in the remaining two hanger bolts. The nut may be discarded after installation.

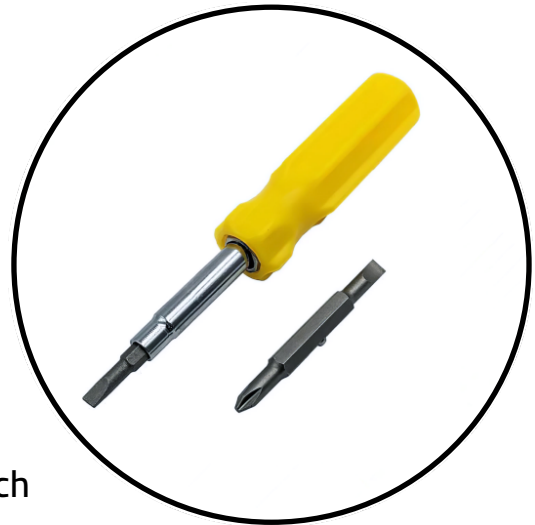


**NOTE:** If you don't have a nut driver bit, a number of hand tools will work as well, such as:

Ratchet with a 5/16" socket



6-in-1 screwdriver



Adjustable wrench



7) Then, hang isolé with the 3 plastic screw knobs onto the installed hanger bolts.



The Audimute tag should face the sound you wish to manage.



You can easily remove the 3 knobs if you need to uninstall isolé.





## INSTALLATION AND UPKEEP BEST PRACTICES

**REMEMBER:** To prevent damage to isolé caused by the door opening into it and to allow the door to function as intended, follow these instructions:

### To block sound from getting in:

**If the door opens in,** mount isolé on the **door frame** facing the sound.

**If the door opens out,** mount isolé on **the door** facing the sound.

### To block sound from getting out:

**If the door opens in,** mount isolé on **the door** facing the sound.

**If the door opens out,** mount isolé on the **door frame** facing the sound.

For best results, we recommend pairing isolé with our Acoustic Seal Door Kit. It keeps sound from getting in and out of a room via the gaps around a door.

isolé Sound Barrier Sheet will fit most standard (32" by 80") residential wooden interior doors. Custom-sized options are also available (with max dimensions of 46.5" x 144").

If properly installed over your door, isolé WILL rest over the knob/handle. We do NOT recommend cutting a hole in the sheet for the doorknob to fit through, as it will compromise the integrity and effectiveness of isolé.

Clean with a water-based cleaning agent, with foam, or with a pure water-free solvent. Vacuuming or light brushing is recommended to prevent dust and soil buildup. isolé should NOT be washed in a washing machine.

NOTE: isolé is NOT intended for use on walls or ceilings, or for use outdoors.

Please contact Audimute for further information on different installation methods.



Audimute.com  
1.866.505.MUTE